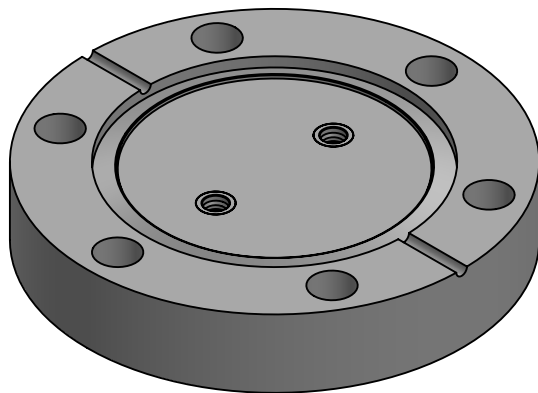
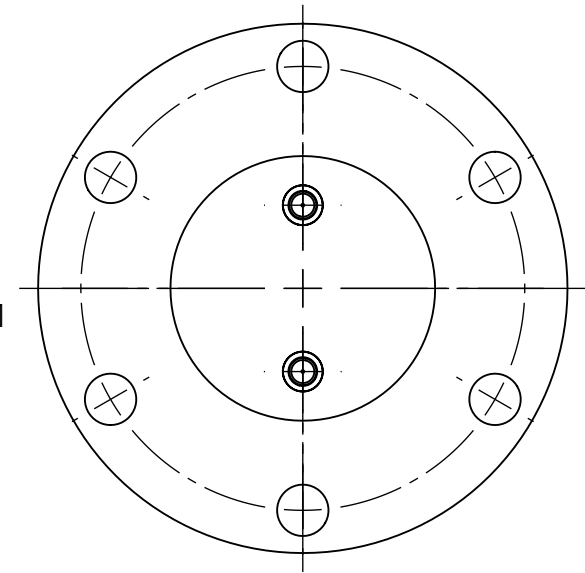
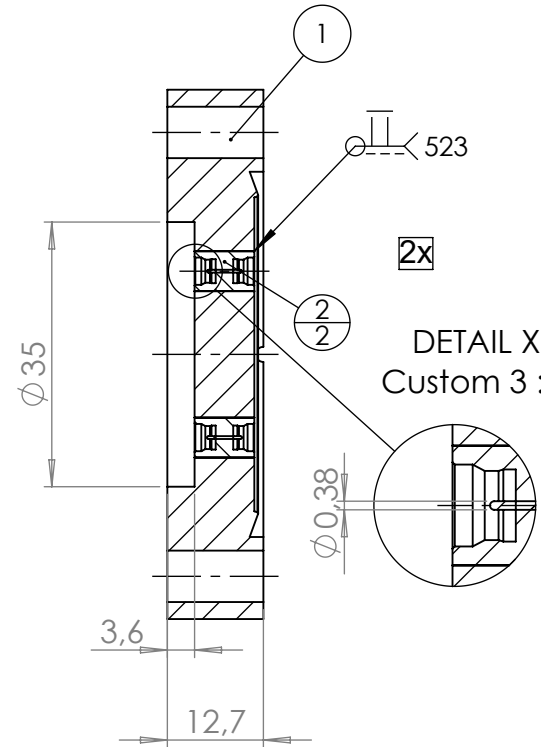
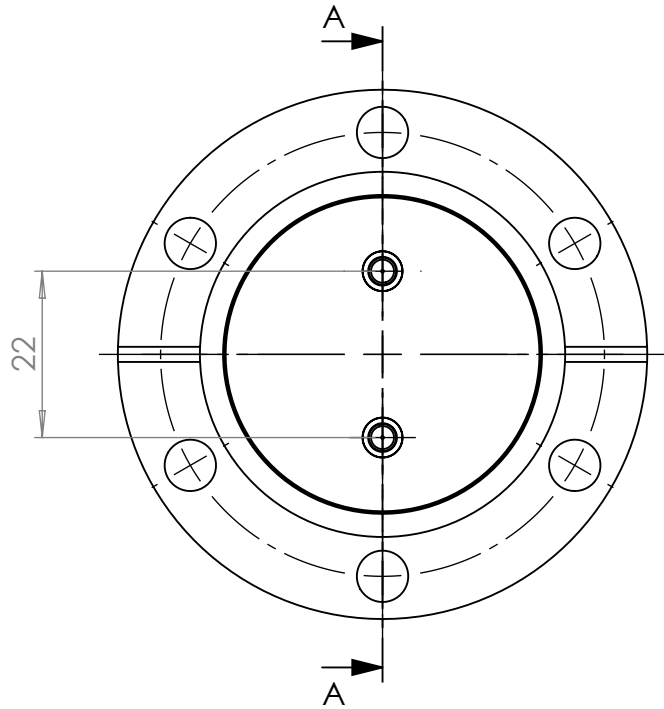


POS. NO.	DESCRIPTION	MATERIAL	QTY
1	modified flange DN40 CF	1.4404 (316L)	1
2	SMP feedthrough, double sided, limited detent	1.4306 (304L)	2

SECTION A-A



<1 E-10 mbar*/sec, He, according to DIN EN 1779-A3
Definition Leckprüfung (definon leak check)

Zeichnung Nutzung (SCOPE OF DRAWING) Drawing external usage for customer		Prüfung Zubehör. (CON + HSG CHECK)		Bemerkung (REMARKS)		Kanten (EDGES)		PROJECTION	
All informations provided in this drawing is considered to be confidential, proprietary and secret information. It is intended only for the use of individual or entity to whom it is sent. Individual or entity agrees to not disseminate or copy this information to anyone other than originally specified without the written consent Allectra GmbH.		Werkstoff (MATERIAL):		Gewicht (WEIGHT):		Toleranz (TOLERANCE) DIN EN ISO 13920-C (welding ASSY)			
		Oberfläche (SURFACE) Cleaned UHV- Compatible		Maßstab (SCALE): 1:1		Format. (FORM) A4			
name Allectra standard		DATE		NAME		Benennung (DESCRIPTION):			
(drw/doc/sketch)		Design 26.08.2024		AD		2 off SMPD f/t, double sided, limited detent on flange DN40 CF			
date		Drawn 12.09.2024		AD					
REV		Check 17.09.2024		JB					
00 first origin		Approv 17.09.2024		AD		Zeich. Nr. (Drw. No.): 242-SMPD-LD-C40-2		REV 00	
REV Beschreibung (CHANGING)		gesp. am (SAVE DAT.): 17.09.2024		Art. Nr. (PART NO.) 242-SMPD-LD-C40-2					