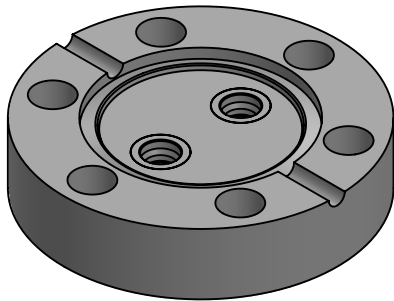
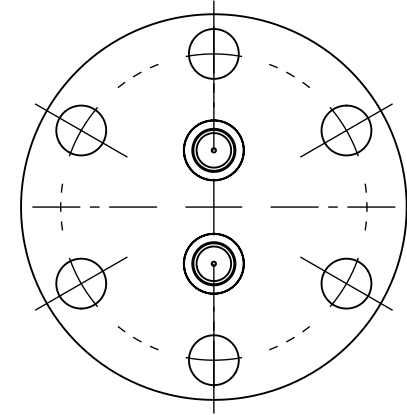
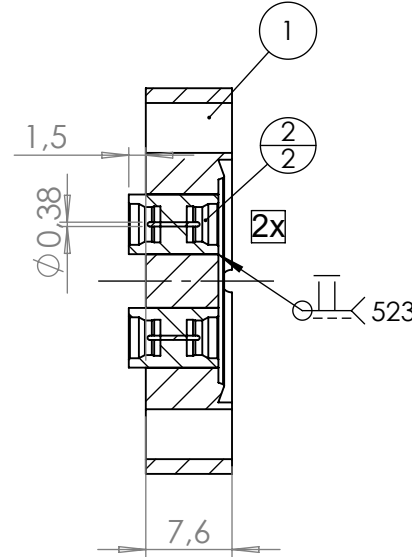
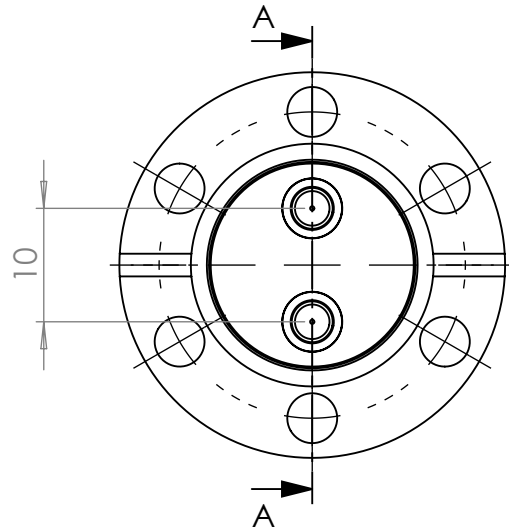


POS. NO.	DESCRIPTION	MATERIAL	QTY
1	modified flange DN16 CF	1.4404 (316L)	1
2	SMP feedthrough, double sided, limited detent	1.4306 (304L)	2

SECTION A-A



<1 E-10 mbar*/sec, He, according to DIN EN 1779-A3
Definition Leckprüfung (definon leak check)

Zeichnung Nutzung (SCOPE OF DRAWING) Drawing external usage for customer		Prüfung Zubehör. (CON + HSG CHECK)		Bemerkung (REMARKS)		Kanten (EDGES)		PROJECTION	
All informations provided in this drawing is considered to be confidential, proprietary and secret information. It is intended only for the use of individual or entity to whom it is sent. Individual or entity agrees to not disseminate or copy this information to anyone other than originally specified without the written consent Allectra GmbH.		Werkstoff (MATERIAL): Gewicht (WEIGHT):		Toleranz (TOLERANCE) DIN EN ISO 13920-C (welding ASSY)					
		Oberfläche (SURFACE) Cleaned UHV- Compatible		g					
		Maßstab (SCALE):		Format. (FORM)		PAGE NO		PAGES	
		1.5:1		A4		1		1	
		Rauheit (ROUGHNESS)							
		Benennung (DESCRIPTION):		2 off SMPD f/t, double sided, limited detent on flange DN16 CF					
name Allectra standard (drw/doc/sketch) date		DATE NAME Design 23.08.2024 AD Drawn 12.09.2024 AD Check 12.09.2024 JB Approv 12.09.2024 AD							
00 first origin									
REV Beschreibung (CHANGING)		gesp. am (SAVE DAT.): 12.09.2024		Zeich. Nr. (Drw. No.): 242-SMPD-LD-C16-2		REV 00		Art. Nr. (PART NO.) 242-SMPD-LD-C16-2	