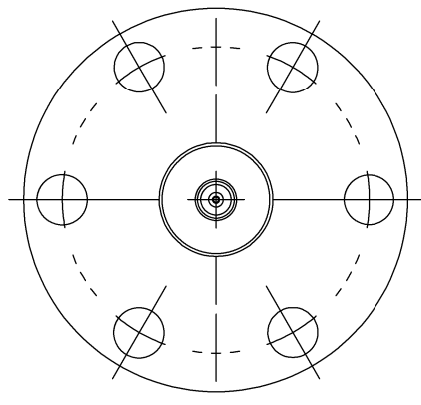
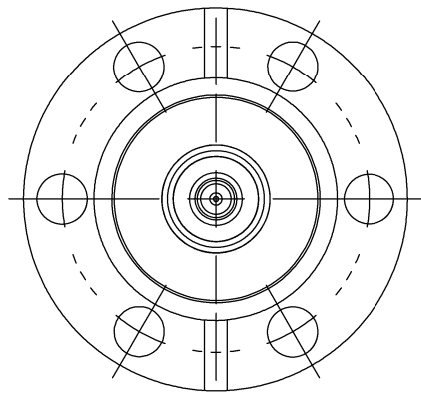
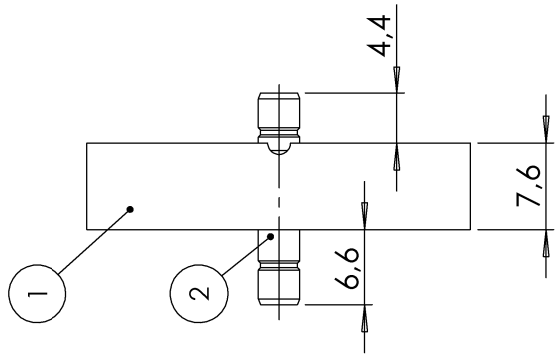


POS-NR.	DESCRIPTION	MATERIAL	QTY
1	modified flange DN16 CF	1.4404 (316L)	1
2	coaxial f/t type SMB, double sided, 50 Ohm, weldable	SS+ glass ceramic	1



**Bemerkungen (Remarks)**

All informations provided in this drawing is considered to be confidential, proprietary and secret information. It is intended only for the use of individual or entity to whom it is sent. Individual or entity agrees to not disseminate or copy this information to anyone other than originally specified without the written consent Allectra GmbH.

Freimaßtoleranz (Standard Toleranz)		Maßstab (Scale)	Rauheit (Roughness)		europ. Projektion
1.5:1		1.5:1	√		 Kanten (edges)
Datum		Name	Material, Standard		Gewicht (weight) <b>45.54</b>
Design	16.11.2021	AD	Oberfläche (treatment)		
Drawn	16.11.2021	AD	Bezeichnung (Title)		Page: 1 Pages: 1
Check			<b>1 off SMBD50 f/t</b> <b>on flange DN16 CF</b>		Revision
			Zeichnungsnummer <b>242-SMBD-C16</b>		Format <b>A4</b>
Index	Modification	Datum	Datei (file) c:\ppm\store\c:\ppm\store\		