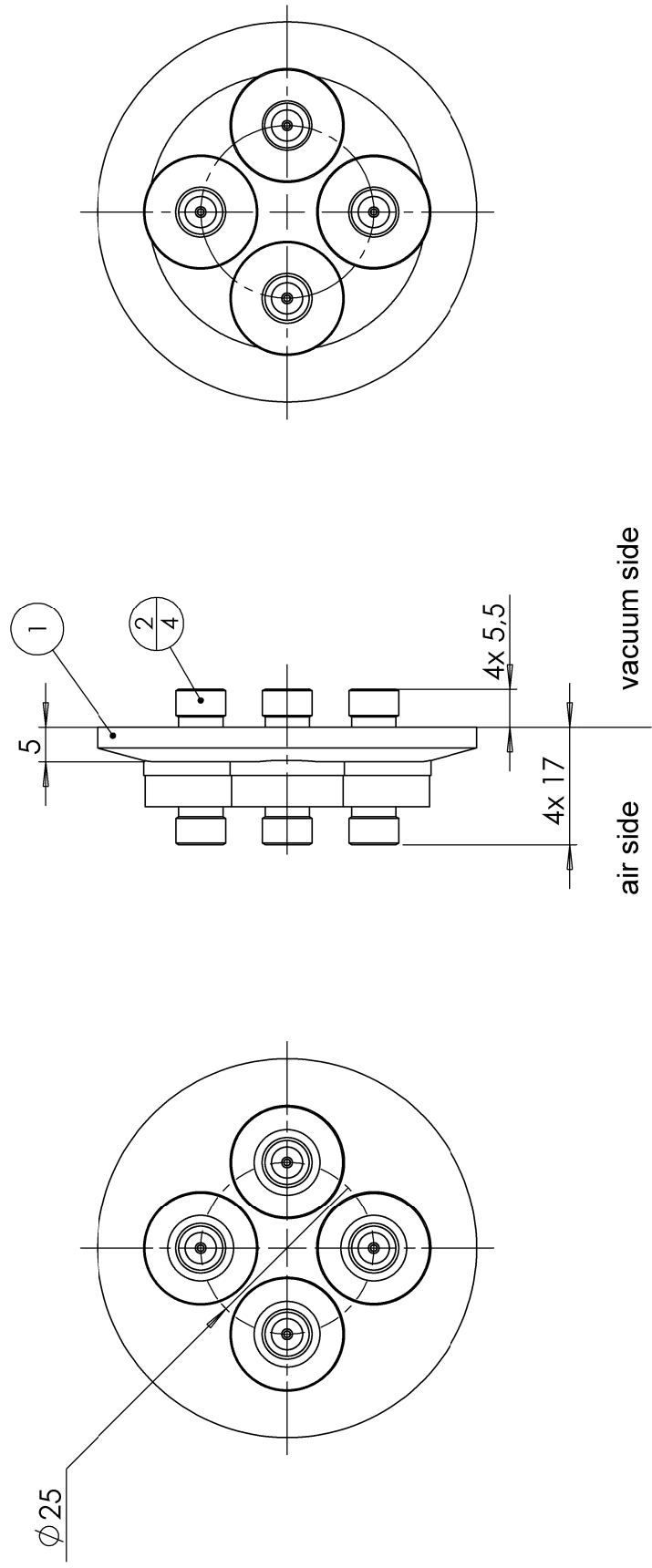
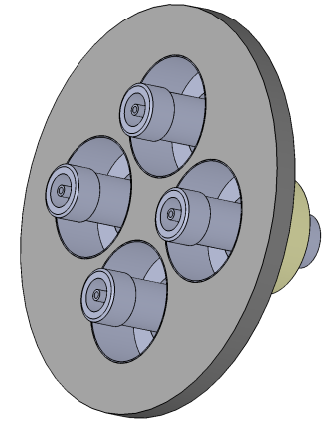


POS-NR.	DESCRIPTION	MATERIAL	QTY
1	modified flange DN40 KF	1.4301 (304)	1
2	SMA f/t double sided floating shield 50 Ohm	SS / ceramic	4



This flange can only be used with outer centering ring



Bemerkungen (Remarks)	Freimaßtoleranz (Standard Toleranz)		Maßstab (Scale)	Rauheit (Roughness)	europ. Projektion
	Design	Datum	Name	Material, Standard Oberfläche (Treatment)	Kanten (edges)
All informations provided in this drawing is considered to be confidential, proprietary and secret information. It is intended only for the use of individual or entity to whom it is sent. Individual or entity agrees to not disseminate or copy this information to anyone other than originally specified without the written consent Allectra GmbH.	09.08.2021	AD	1:1	✓ 4 off coaxial f/t type SMA, double sided, floating shield, 50 Ohm on flange DN40 KF	Gewicht (weight) 508.42 g
	10.08.2021	AD			
					Bezeichnung (Title) 4 off coaxial f/t type SMA, double sided, floating shield, 50 Ohm on flange DN40 KF
					Zeichnungsnummer (Drawing No.) 242-SMADF50-K40-4
					Page: 1 Pages: 1
					Revision
Index	Modification	Datum	Name	Datei: (file) c:\ppl\store\c:\ppl\store\	
<b>allectra</b>				Format A4	