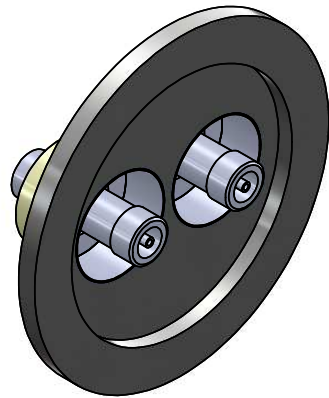
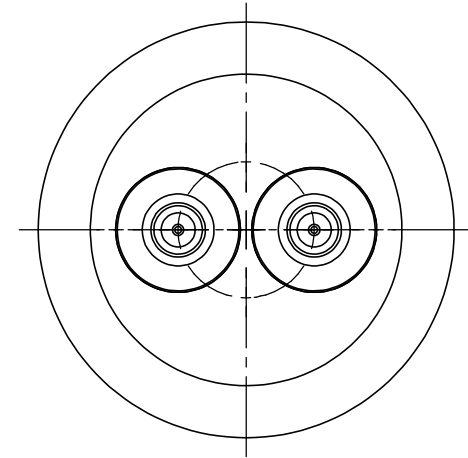
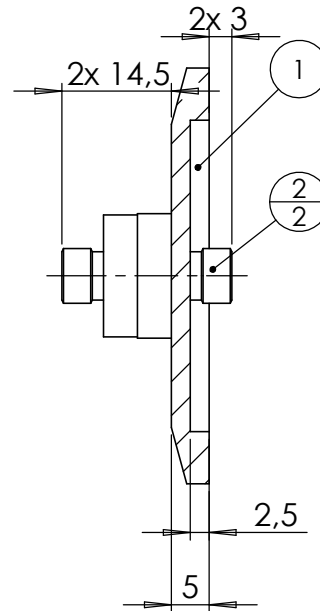
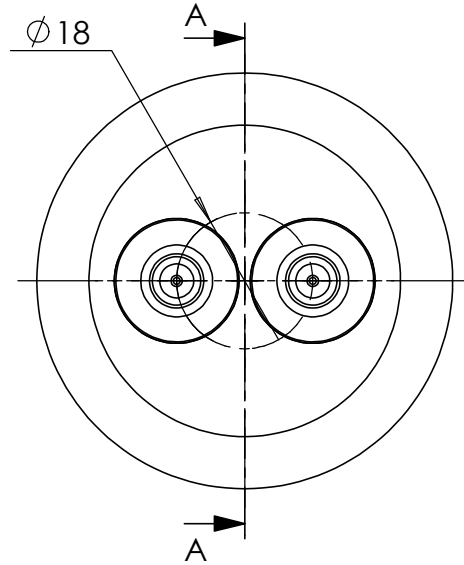


POS-NR.	DESCRIPTION	MATERIAL	QTY
1	modified flange DN40 KF	1.4301 (304)	1
2	SMA f/t double sided floating shield 50 Ohm	SS / ceramic	2

SECTION A-A



Bemerkungen (Remarks)				Freimaßtoleranz (Standard Toleranz)		Maßstab (Scale)	Rauheit (Roughness)		europ.Projektion		
All informations provided in this drawing is considered to be confidential, proprietary and secret information. If is intended only for the use of individual or entity to whom it is sent. Individual or entity agrees to not disseminate or copy this information to anyone other than originally specified without the written consent Allecra GmbH.				Datum		Name	Material, Standard Oberfläche (Treatment)		Kanten (edges)		
											Gewicht (weight)
Design				13.01.2022	AD	Bezeichnung (Title) 2 off SMADF50 f/t on flange DN40 KF		g			
Drawn				13.01.2022	AD			52.28			
Check								Page: 1 Pages: 1			
Index				Modification		Datum		Name		Revision	
										Format A4	
								Zeichnungsnummer (Drawing No.) 242-SMADF50-K40-2			
								Datei (File) C:\PDM-Store\IC\PDM-Store\			

