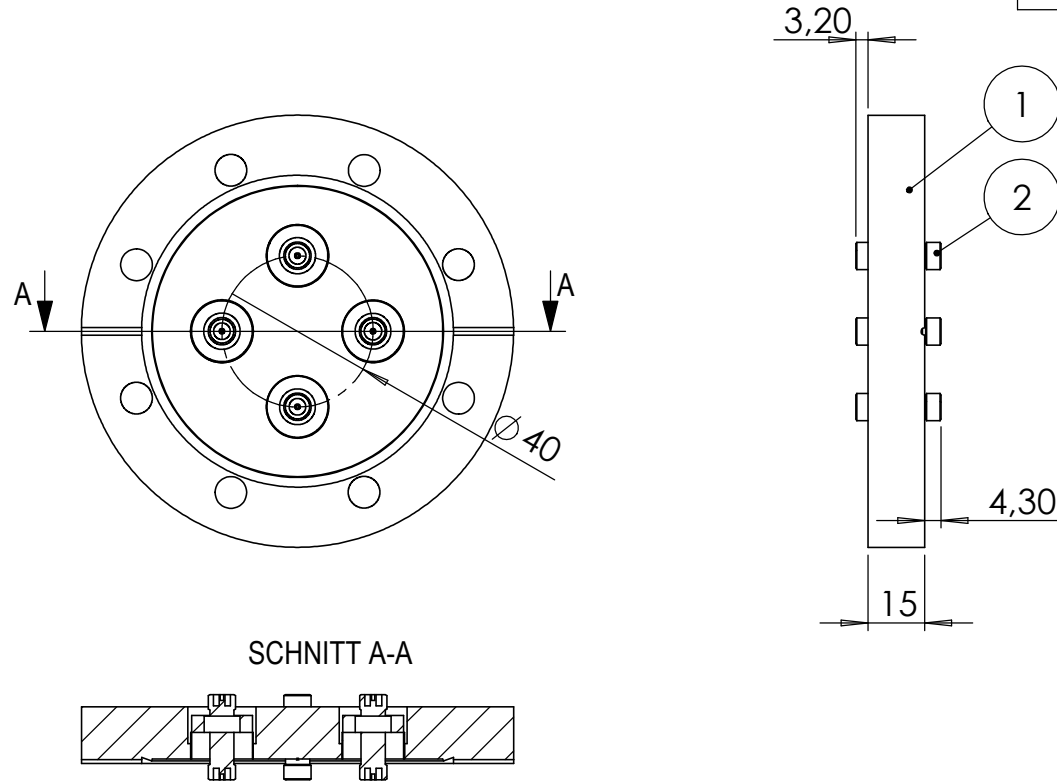
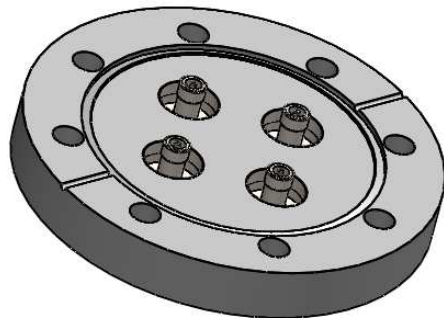


POS-NR.	DESCRIPTION	MATERIAL	QTY
1	modified flange DN63 CF	1.4404 (316L)	1
2	SMA f/t double sided floating	Stainless Steel	4



SCHNITT A-A



Bemerkungen (Remarks)				Freimaßtoleranz (Standard Toleranz)		Maßstab (Scale)	Rauheit (Roughness)	europ.Projektion				
All informations provided in this drawing is considered to be confidential, proprietary and secret information. If is intended only for the use of individual or entity to whom it is sent. Individual or entity agrees to not disseminate or copy this information to anyone other than originally specified without the written consent Allectra GmbH.						1:2						
								Material, Standard		Kanten (edges)		
				Datum		Name	Oberfläche (Treatment)		Gewicht (weight) <b>g</b>			
				Design		27.01.2016	JB	<b>4 of SMADF50 f/t</b> <b>on flange DN63 CF</b>		1060.64		
				Drawn		27.01.2016	JB			Page:	Pages:	
				Check						1	1	
							Zeichnungsnummer (Drawing No.) <b>242-SMADF50-C63-4</b>		Revision			
Index				Modification		Datum		Name		Datei (File) C:\PDMStore\C:\PDMStore\		Format <b>A4</b>