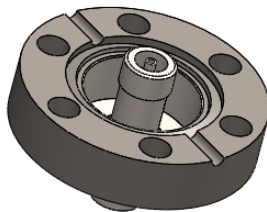
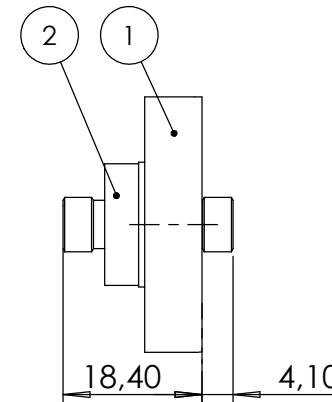
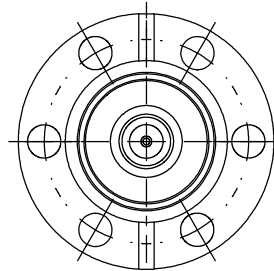


POS-NR.	DESCRIPTION	MATERIAL	QTY
1	Welding Flange DN16 CF	1.4404 (X2CrNiMo17-12-2)	1
2	SMA f/t double sided floating	Stainless Steel	1



Bemerkungen (Remarks)				Freimaßtoleranz (Standard Toleranz)		Maßstab (Scale)	Rauheit (Roughness)	europ.Projektion	
All informations provided in this drawing is considered to be confidential, proprietary and secret information. If is intended only for the use of individual or entity to whom it is sent. Individual or entity agrees to not disseminate or copy this information to anyone other than originally specified without the written consent Allectra GmbH.						1:1			
									Material, Standard Oberfläche (Treatment)
				Datum	Name	Bezeichnung (Title) SMA double sided, floating shield on flange DN16 CF		Gewicht (weight) g 44.47	
				Design	28.04.2015				JB
				Drawn	28.04.2015				JB
				Check				Page: 1 / Pages: 1	
						Zeichnungsnummer (Drawing No.) 242-SMADF50-C16		Revision	
Index	Modification	Datum	Name			Datei (File) C:\PDMStore\IC\PDMStore\		Format A4	