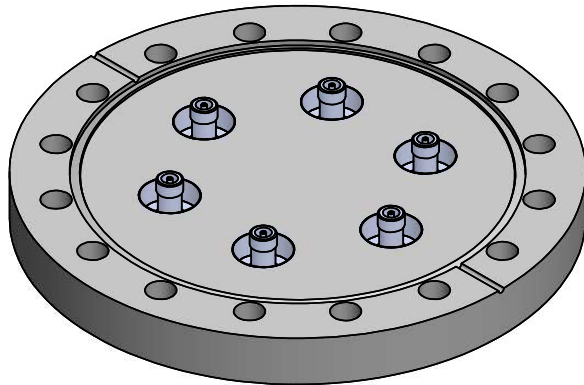
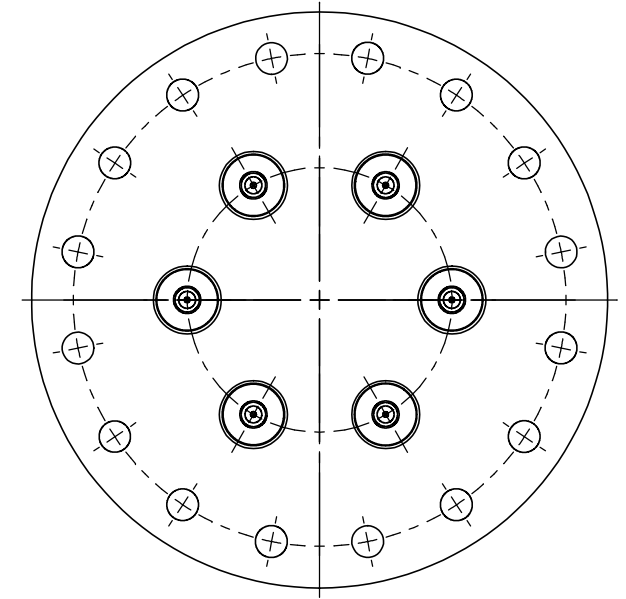
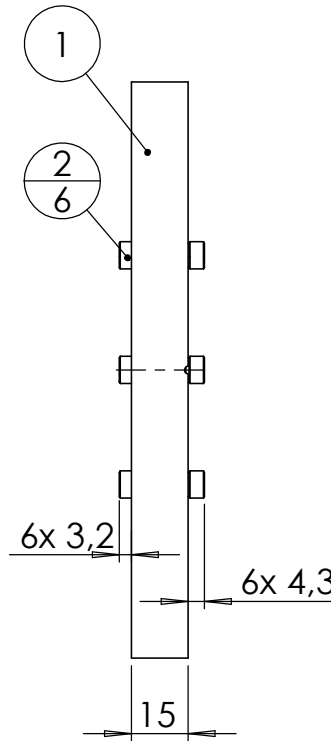
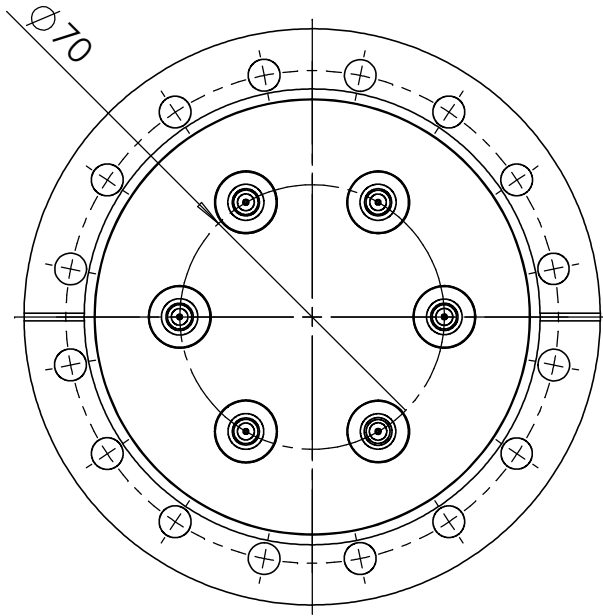


POS-NR.	DESCRIPTION	MATERIAL	QTY
1	modified flange DN100 CF	1.4404 (316L)	1
2	SMA f/t double sided floating shield 50 Ohm	SS / ceramic	6



Bemerkungen (Remarks)				Freimaßtoleranz (Standard Toleranz)		Maßstab (Scale)	Rauheit (Roughness)	europ.Projektion		
All informations provided in this drawing is considered to be confidential, proprietary and secret information. If is intended only for the use of individual or entity to whom it is sent. Individual or entity agrees to not disseminate or copy this information to anyone other than originally specified without the written consent Alletra GmbH.						1:2				
								Material, Standard	Kanten (edges)	
								Oberfläche (Treatment)		
				Datum	Name	Bezeichnung (Title)		Gewicht (weight)		
				Design	15.03.2021	AD	6 off SMADF50 f/t		g	
				Drawn	15.03.2021	AD	on flange DN100 CF		1819.86	
				Check			Page:	Pages:		
							1	1		
						Zeichnungsnummer (Drawing No.)		Revision		
						242-SMADF50-C100-6				
Index	Modification	Datum	Name	Datei (File)		C:\PDM-Store\IC\PDM-Store\		Format A4		