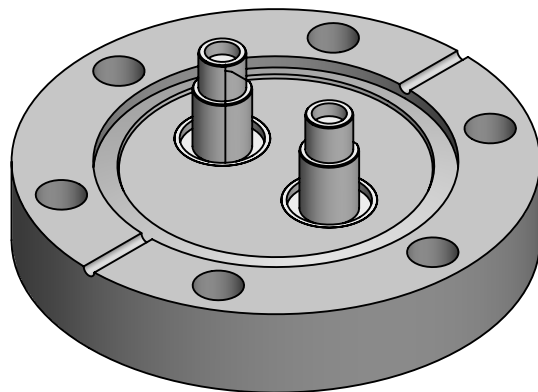
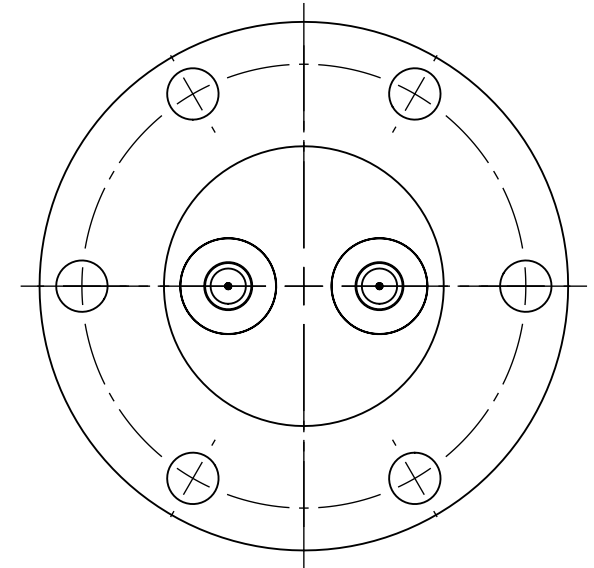
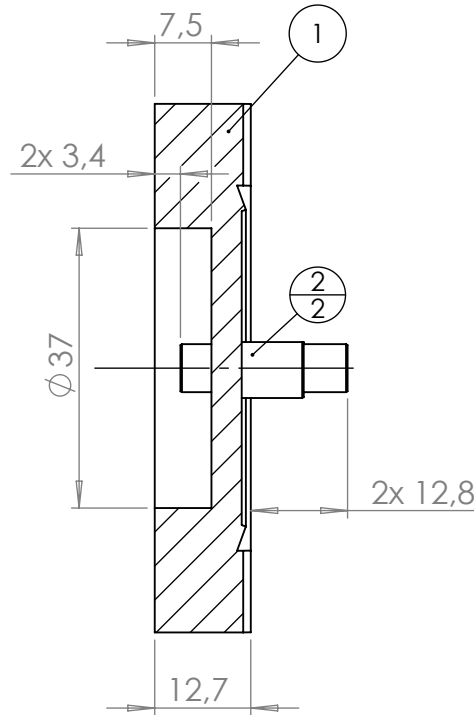
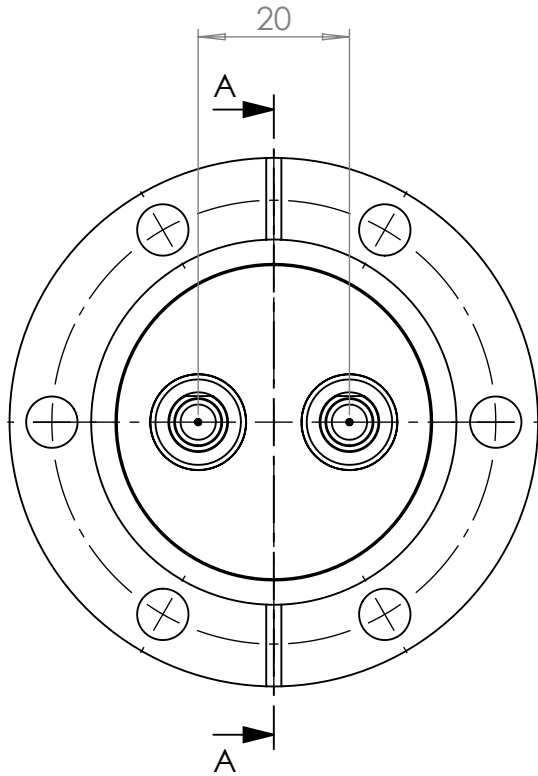


POS. NO.	DESCRIPTION	MATERIAL	QTY
1	modified flange DN40 CF	1.4404 (316L)	1
2	coaxial f/t type SMA, 27GHz, 50 OHM, double sided, weldable	stainless steel	2

SECTION A-A



<1 E-10 mbar*/sec, He, according to DIN EN 1779-A3
Definition Leckprüfung (definon leak check)

Zeichnung Nutzung (SCOPE OF DRAWING) Drawing external usage for customer		Prüfung Zubehör. (CON + HSG CHECK)		Bemerkung (REMARKS)		Kanten (EDGES)		PROJECTION		
All informations provided in this drawing is considered to be confidential, proprietary and secret information. It is intended only for the use of individual or entity to whom it is sent. Individually or entity agrees to not disseminate or copy this information to anyone other than originally specified without the written consent Allectra GmbH.		Werkstoff (MATERIAL): Gewicht (WEIGHT):		Toleranz (TOLERANCE): DIN EN ISO 13920-C (welding ASSY)						
		Oberfläche (SURFACE) Cleaned UHV- Compatible		g						
name Allectra standard		DATE	NAME	Maßstab (SCALE):	Format. (FORM)	PAGE NO	PAGES	Rauheit (ROUGHNESS)		
(drw/doc/sketch)		Design 29.11.2013	AD	1:1	A4	1	1	$\sqrt{\quad}$		
date		Drawn 28.08.2024	AD	Benennung (DESCRIPTION):						
REV		Check 28.08.2024	JB	2 off SMAD27G f/t on flange DN40 CF						
00 first origin		Approv 28.08.2024	AD	Zeich. Nr. (Drw. No.): 242-SMAD27G-C40-2						REV 00
REV Beschreibung (CHANGING)		gesp. am (SAVE DAT.): 28.08.2024		Art. Nr. (PART NO.): 242-SMAD27G-C40-2						

