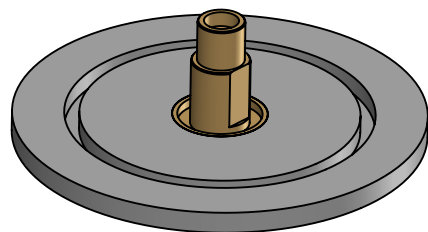
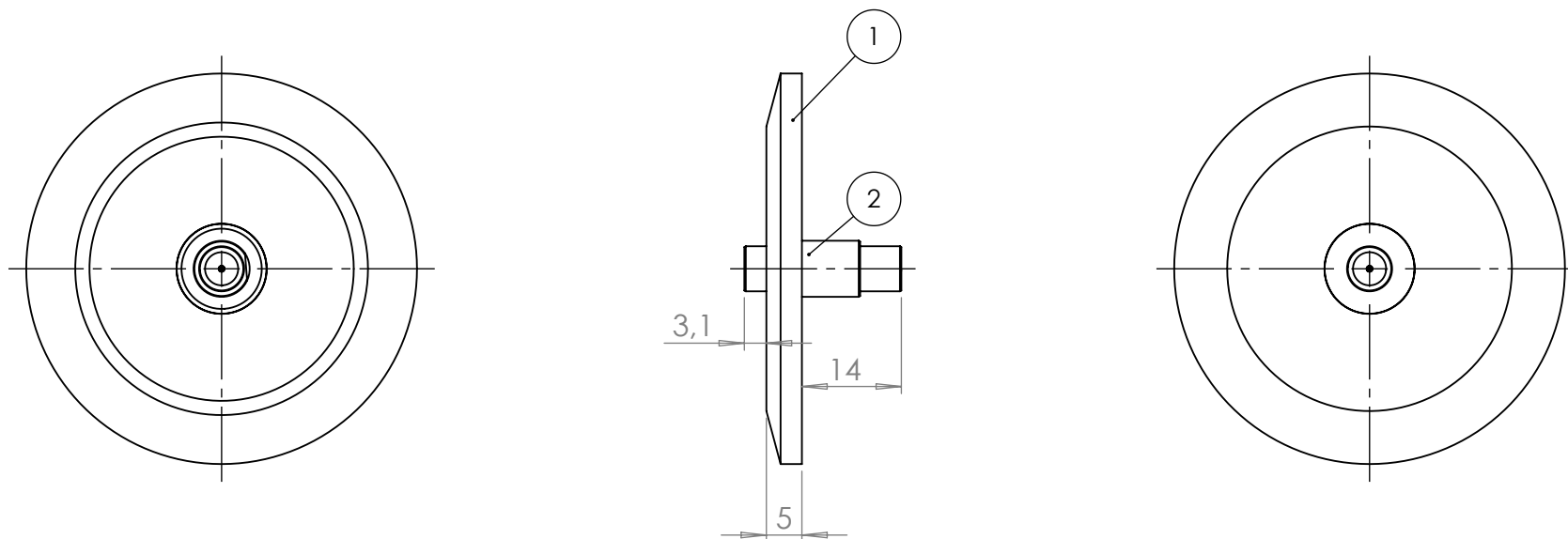


POS. NO.	DESCRIPTION	MATERIAL	QTY
1	modified flange DN40 KF	1.4301 (304)	1
2	SMA high frequency 18GHz, 50 Ohm	SS-Gold Plated	1



<1 E-9 mbar\*/sec, He, according to DIN EN 1779-A3  
Definition Leckprüfung (definited leak check)

Zeichnung Nutzung (SCOPE OF DRAWING) Drawing external usage for customer		Prüfung Zubehör. (CON + HSG CHECK)		Bemerkung (REMARKS)		Kanten (EDGES)		PROJECTION	
All informations provided in this drawing is considered to be confidential, proprietary and secret information. It is intended only for the use of individual or entity to whom it is sent. Individual or entity agrees to not disseminate or copy this information to anyone other than originally specified without the written consent Allectra GmbH.		Werkstoff (MATERIAL):		Gewicht (WEIGHT):		Toleranz (TOLERANCE):		DIN EN ISO 13920-C (welding ASSY)	
		Oberfläche (SURFACE):		Cleaned HV- Compatible		Maßstab (SCALE):		1:1	
name		Allectra standard		DATE		NAME		Benennung (DESCRIPTION):	
(drw/doc/sketch)				Design 04.05.2015		AD		1 off SMAD18G f/t	
date		REV		Drawn 20.11.2024		AD		on flange DN40 KF	
00		first origin		Check 21.11.2024		JB		Zeich. Nr. (Drw. No.):	
				Approv 21.11.2024		AD		242-SMAD18G-K40	
								REV	
								00	
REV		Beschreibung (CHANGING)		gesp. am (SAVE DAT.): 21.11.2024		Art. Nr. (PART NO.): 242-SMAD18G-K40			