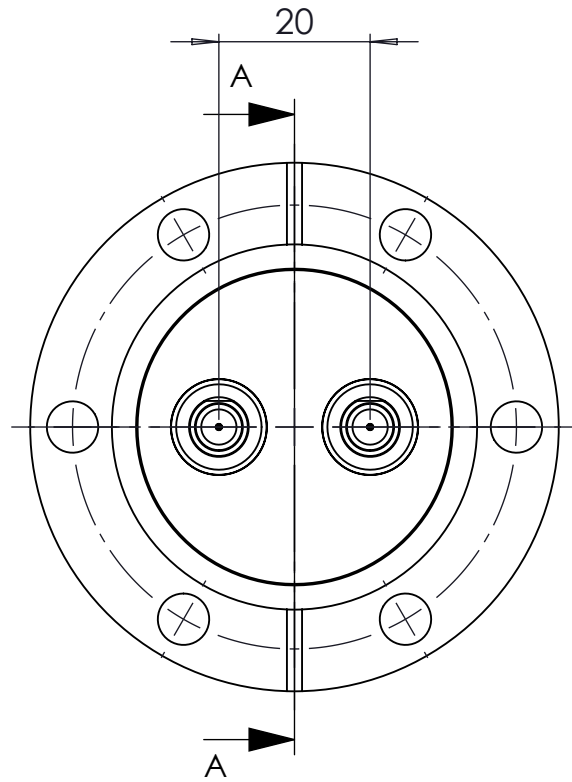
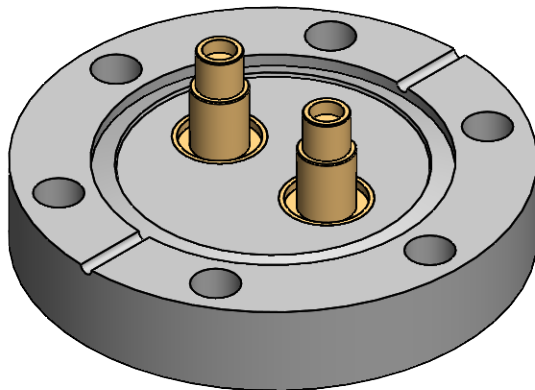
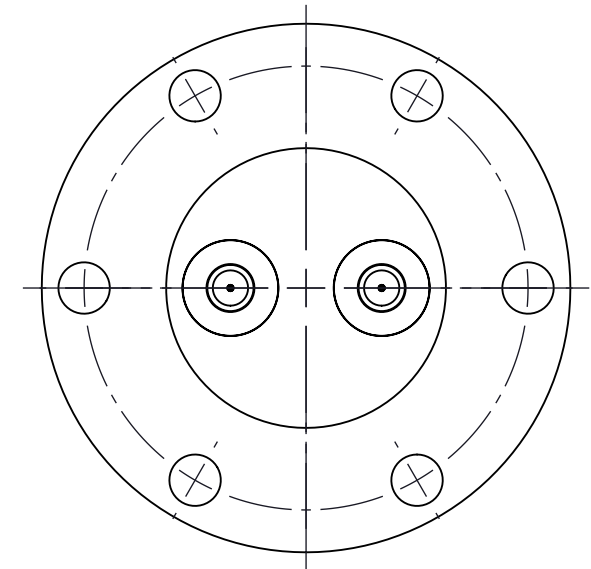
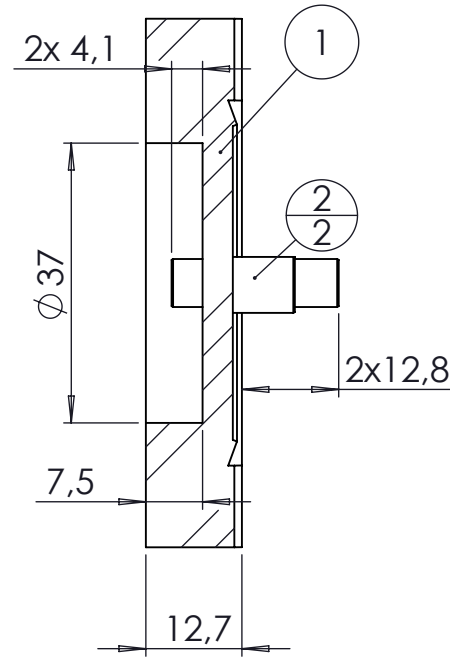


POS.	DESCRIPTION	MATERIAL	QTY
1	modified flange DN40 CF	1.4404 (316L)	1
2	SMA high frequency 18GHz, 50 Ohm	SS-Gold Plated	2



SECTION A-A



<1x10 E-10 mbar*/sec, according DIN EN 1779
Definition Leckprüfung (definon leak check)

Zeichnung Nutzung (using drawing) Drawing external use for customer		Verwendetes Material (USED MATERIAL)		Bemerkung (REMARKS)		Kanten (EDGES)		PROJECTION	
All informations provided in this drawing is considered to be confidential, proprietary and secret information. It is intended only for the use of individual or entity to whom it is sent. Individually or entity agrees to not disseminate or copy this information to anyone other than originally specified without the written consent Alletra GmbH.		Werkstoff (MATERIAL): Gewicht (WIGHT): g		Toleranz (TOLERANCE) DIN EN ISO 13920-C					
Oberfläche (SURFACE) Cleaned UHV- Compatible		Maßstab (SCALE): 1:1		Format. (FORM) A4		PAGE NO 1		PAGES 1	
Rauheit (ROUGHNESS) √		Benennung (DESCRIPTION): 2 off SMAD18G f/t on flange DN40 CF							
origin		DATE		NAME		Zeich. Nr. (Drw. No.): 242-SMAD18G-C40-2			
name Alletra standard		Design 29.11.2013		JB		REV 00			
(drw/doc/sketch)		Drawn 21.02.2024		AD					
date		Check 21.02.2024		JUB					
00 first origin		Approv 21.02.2024		AD		Art. Nr. (PART NO.) 242-SMAD18G-C40-2			
REV Beschreibung (CHANGING)		gesp. am (SAVE DAT.): 21.02.2024							