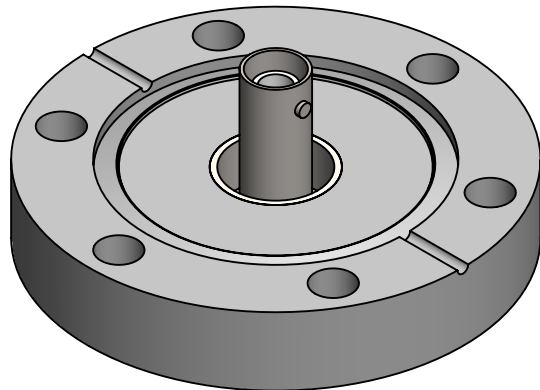
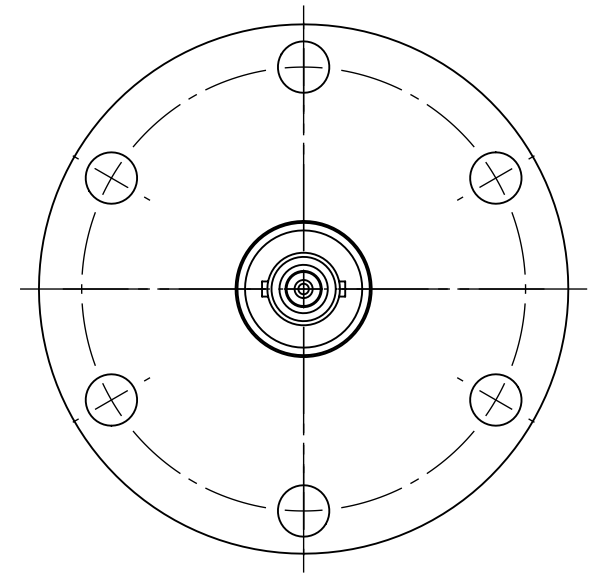
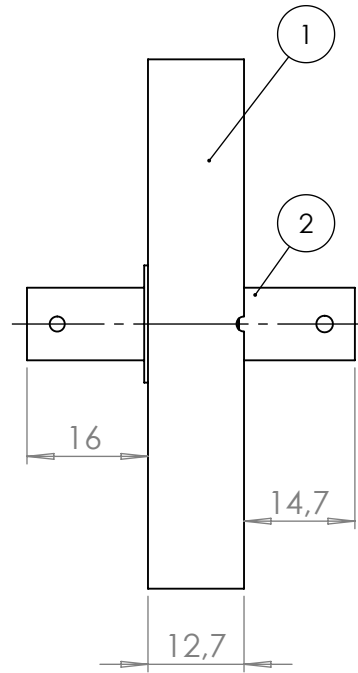
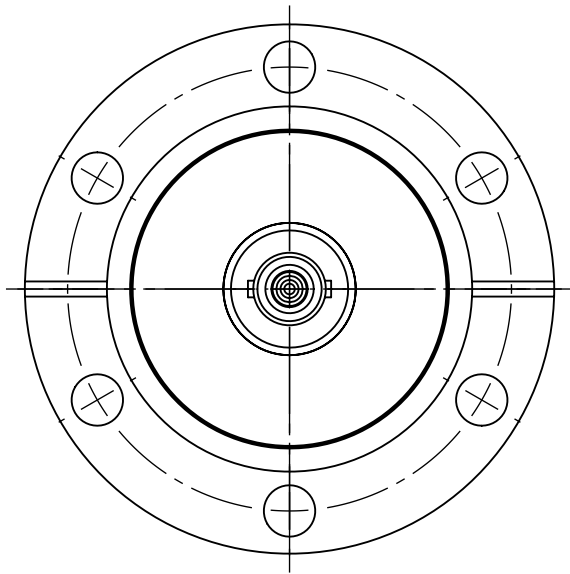


POS. NO.	DESCRIPTION	MATERIAL	QTY
1	modified flange DN40 CF	1.4404 (316L)	1
2	coaxial f/t type SHV, 6KV, 3A, 50 Ohm, double sided, floating shield, weldable	SS/ ceramic	1



<1 E-10 mbar*/sec, He, according to DIN EN 1779-A3
Definition Leckprüfung (definon leak check)

Zeichnung Nutzung (SCOPE OF DRAWING) Drawing external usage for customer		Prüfung Zubehör. (CON + HSG CHECK)		Bemerkung (REMARKS)		Kanten (EDGES)		PROJECTION		
All informations provided in this drawing is considered to be confidential, proprietary and secret information. It is intended only for the use of individual or entity to whom it is sent. Individual or entity agrees to not disseminate or copy this information to anyone other than originally specified without the written consent Allectra GmbH.		Werkstoff (MATERIAL): Gewicht (WEIGHT):		Toleranz (TOLERANCE): DIN EN ISO 13920-C (welding ASSY)						
		Oberfläche (SURFACE) Cleaned UHV- Compatible		Maßstab (SCALE): 1:1						Format. (FORM) A4
origin	name	Allectra standard	DATE	NAME	Benennung (DESCRIPTION): 1 off SHVDF50 f/t on flange DN40 CF					
	(drw/doc/sketch)		Design	12.08.2024						AD
	date		Drawn	12.08.2024						AD
			Check	12.08.2024						JB
00	first origin	Approv	12.08.2024	AD	Zeich. Nr. (Drw. No.): 242-SHVDF50-C40 REV 00					
REV	Beschreibung (CHANGING)	gesp. am (SAVE DAT.):	12.08.2024	Art. Nr. (PART NO.):						242-SHVDF50-C40

