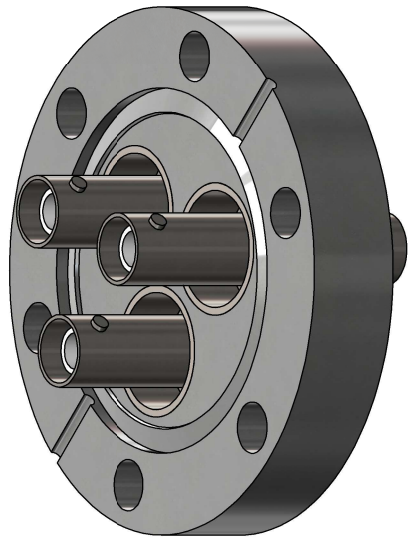
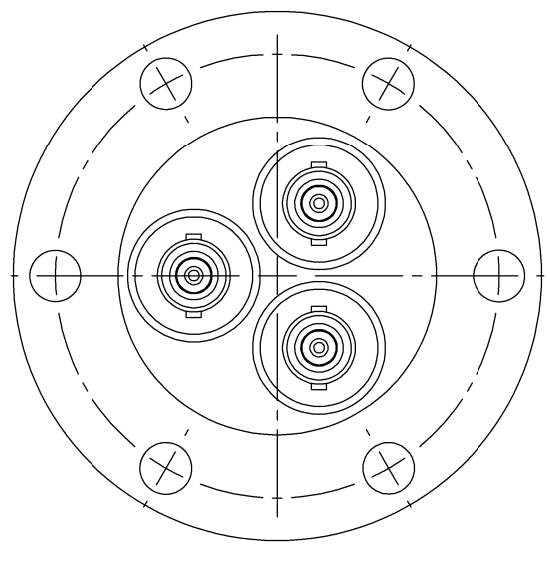
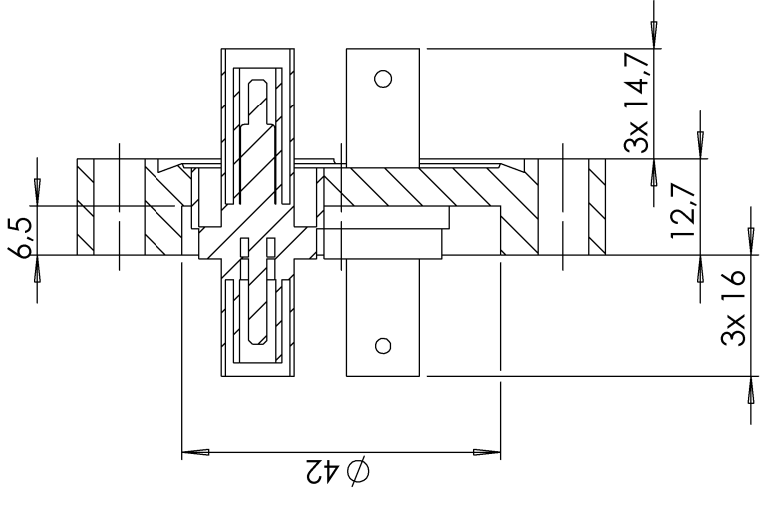
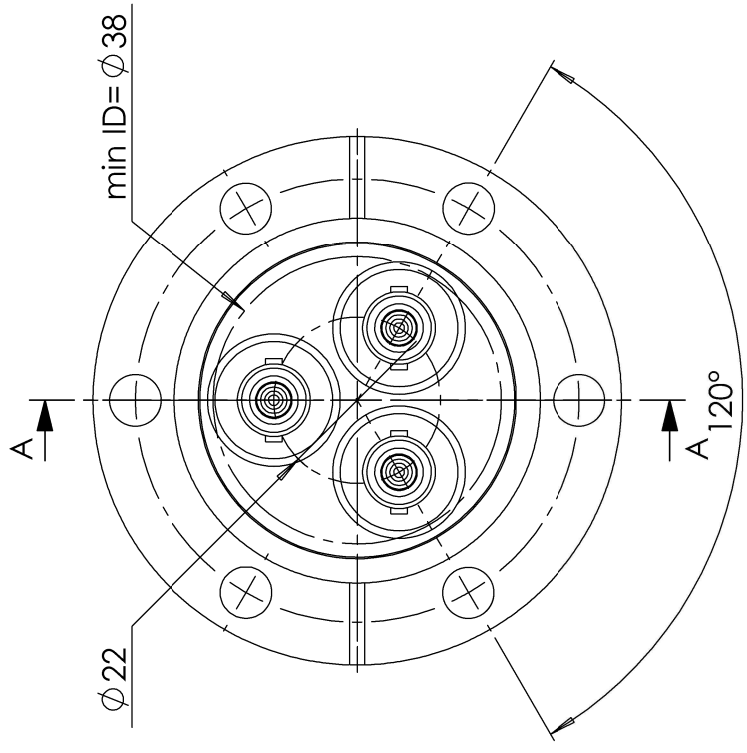


POS-NR.	DESCRIPTION	MATERIAL	QTY
1	modified flange DN40 CF	1.4404 (316L)	1
2	coaxial f/t type SHV, 50 Ohm, double sided, floating shield, weldable	stainless steel	3

SECTION A-A



Bemerkungen (Remarks)		Freimaßtoleranz (Standard Toleranz)	Maßstab (Scale)	Rauheit (Roughness)	europ. Projektion
<p>All informations provided in this drawing is considered to be confidential, proprietary and secret information. It is intended only for the use of individual or entity to whom it is sent. Individual or entity agrees to not disseminate or copy this information to anyone other than originally specified without the written consent Allectra GmbH.</p>		1:1	1:1	✓	 Kanten (edges)
		Datum Design 13.10.2021 Drawn 18.10.2021 Check		Material, Standard Oberfläche (Treatment)	Gewicht (weight)
		Name AD AD		Bezeichnung (Title)	313.89
		Datum Name		3 off coaxial f/t type SHVDF50 on flange DN40 CF	Pages: 1 1
Index	Modification	Datum	Name	Zeichnungsnummer (Drawing No.) 242-SHVDF50-C40-3	
				Revision	
Datei (file) c:\ppm\store\c:\ppm\store\				Format A4	