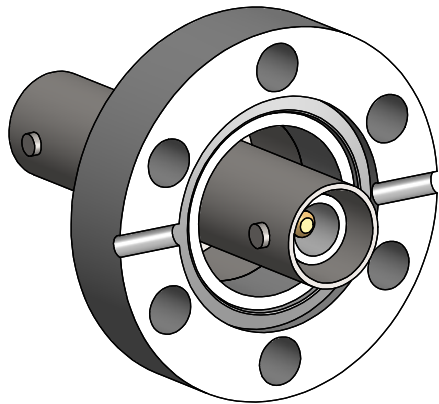
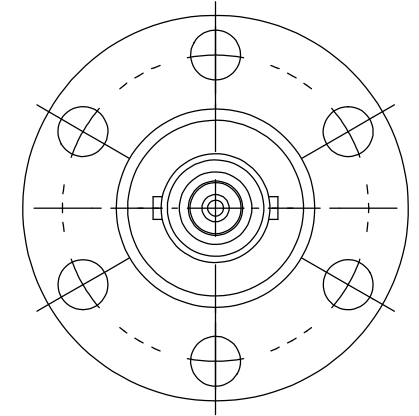
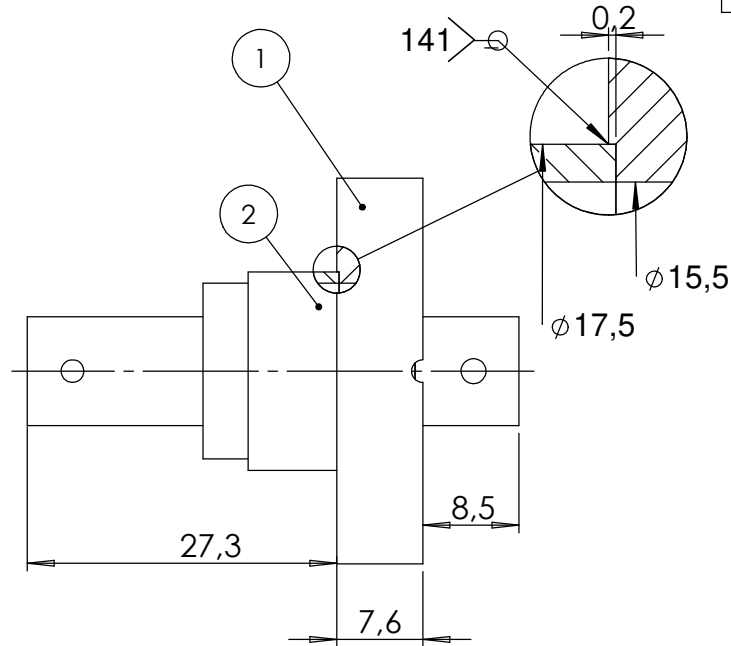
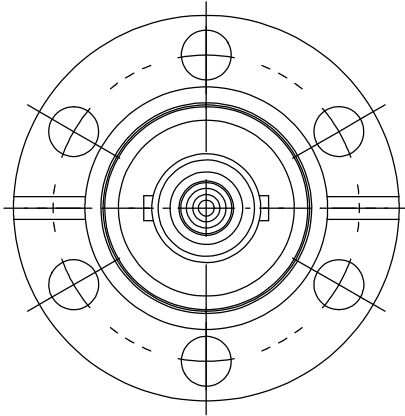


POS-NR.	DESCRIPTION	MATERIAL	QTY
1	modified flange DN16 CF	1.4404 (316L)	1
2	coaxial f/t type SHV, 6KV, 3A, 50 Ohm, double sided, floating shield, weldable	SS/ ceramic	1

DETAIL X
SCALE 5 : 1



Bemerkungen (Remarks)				Freimaßtoleranz (Standard Tolerance)		Maßstab (Scale)	Rauheit (Roughness)	europ.Projektion		
All informations provided in this drawing is considered to be confidential, proprietary and secret information. It is intended only for the use of individual or entity to whom it is sent. Individual or entity agrees to not disseminate or copy this information to anyone other than originally specified without the written consent Alletra GmbH.						1.5:				
								Material, Standard Oberfläche (Treatment)	Kanten (edges)	
				Datum	Name	Bezeichnung (Title)		Gewicht (weight) g		
				Design	07.12.2022	AD	1 off SHVDF50 f/t on flange DN16 CF		1	
				Drawn	07.12.2022	AD			Page: 1	
				Check					Pages: 1	
									Revision	
							Zeichnungsnummer (Drawing No.)			
							242-SHVDF50-C16			
Index				Modification	Date	Name	Datei (File) C:\PDMstore\C:\PDMstore\		Format A4	



Approval
07.12.2022, 10:31:30
Jens Bohl