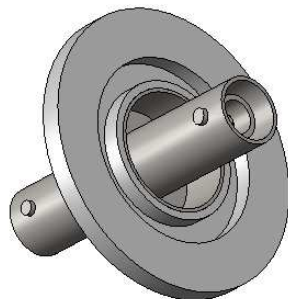
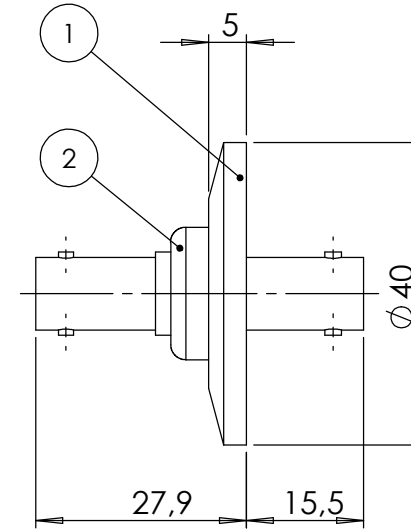
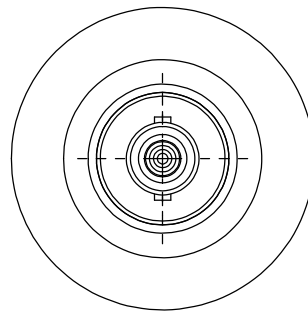


POS-NR.	DESCRIPTION	MATERIAL	QTY
1	modified flange DN25 KF	1.4301 (304)	1
2	Coaxial F/T type SHV, weldable	Stainless Steel	1



Bemerkungen (Remarks)				Freimaßtoleranz (Standard Toleranz)		Maßstab (Scale)	Rauheit (Roughness)		europ.Projektion	
All informations provided in this drawing is considered to be confidential, proprietary and secret information. If is intended only for the use of individual or entity to whom it is sent. Individual or entity agrees to not disseminate or copy this information to anyone other than originally specified without the written consent Allectra GmbH.				Datum		Name	Material, Standard Oberfläche (Treatment)		Kanten (edges)	
				Design	15.12.2015	JB	Bezeichnung (Title) SHVD50 f/t on flange DN25 KF		g	
				Drawn	15.12.2015	JB			49.13	
				Check					Page:	Pages:
							Zeichnungsnummer (Drawing No.)		Revision	
							242-SHVD50-K25			
Index	Modification	Datum	Name			Datei (File)		C:\PDMStore\C:\PDMStore\		Format A4