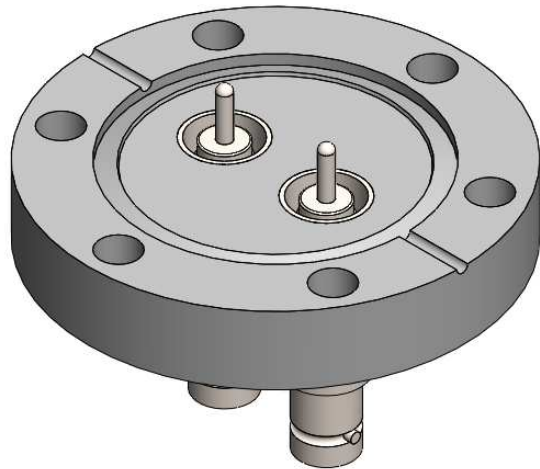
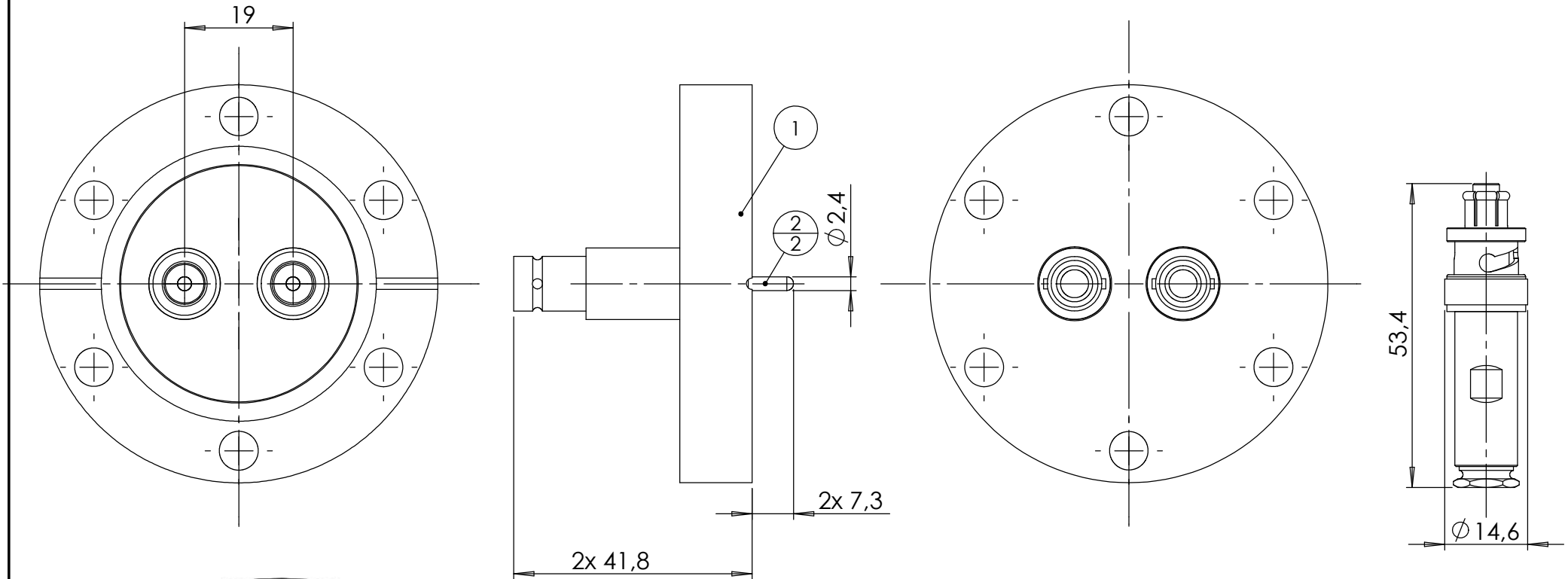


POS-NR.	DESCRIPTION	MATERIAL	QTY
1	modified flange DN40 CF	1.4404 (316L)	1
2	coaxial f/t type SHV, 5KV, 5A, grounded shield, weldable	Stainless Steel	2



air side connectors are included

Bemerkungen (Remarks)				Freimaßtoleranz (Standard Toleranz)		Maßstab (Scale)	Rauheit (Roughness)		europ.Projektion		
All informations provided in this drawing is considered to be confidential, proprietary and secret information. If is intended only for the use of individual or entity to whom it is sent. Individual or entity agrees to not disseminate or copy this information to anyone other than originally specified without the written consent Allectra GmbH.				Datum		Name	Material, Standard Oberfläche (Treatment)		Kanten (edges)		
											Design 15.05.2019 AD
				Drawn 17.08.2022 AD		Check	Bezeichnung (Title)		Page: 2		
									Pages: 4		
Index				Modification		Datum		Name		Revision	
										Format A4	
						Zeichnungsnummer (Drawing No.)		241-SHV-C40-2			
						Datei (File)		C:\PDMstore\C:\PDMstore\			

