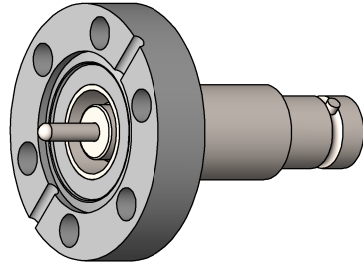
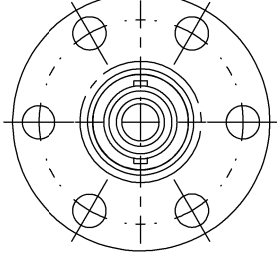
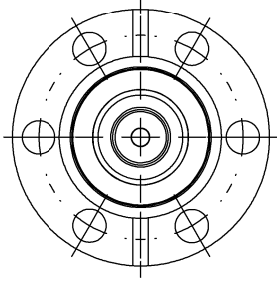
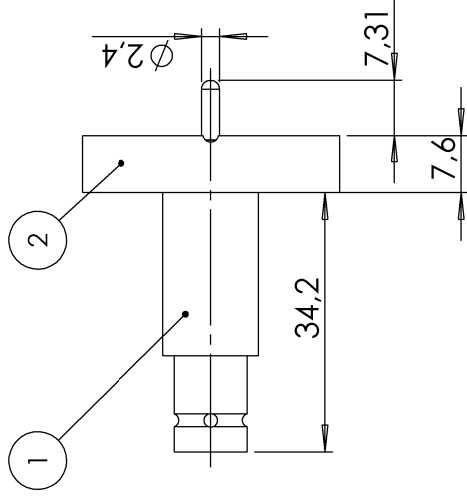


POS-NR.	DESCRIPTION	MATERIAL	QTY
1	coaxial f/t type SHV 5KV DC / 5A max	Stainless Steel	1
2	modified flange DN16 CF	1.4404 (316L)	1



air side connector is included

Bemerkungen (Remarks)		Freimaßtoleranz (Standard Toleranz)		Maßstab (Scale)	Rauheit (Roughness)		europ.Projektion
<p>All informations provided in this drawing is considered to be confidential, proprietary and secret information. It is intended only for the use of individual or entity to whom it is sent. Individual or entity agrees to not disseminate or copy this information to anyone other than originally specified without the written consent Allectra GmbH.</p>		1:1		1:1	Material, Standard Oberfläche (Treatment)		 Kanten (edges)
		Datum		Name	Bezeichnung (Title)		Gewicht (weight)
		Design 28.06.2021		AD	1 off coaxial f/t type SHV		57.93
		Drawn 28.06.2021		AD	on flange DN16 CF		Page: 1 Pages: 1
Check					Zeichnungsnummer (Drawing No.)		Revision
					241-SHV-C16		
Index		Modification	Datum	Name			
					Datei (file) c:\ppm\store\C:\ppm\Store\		Format A4