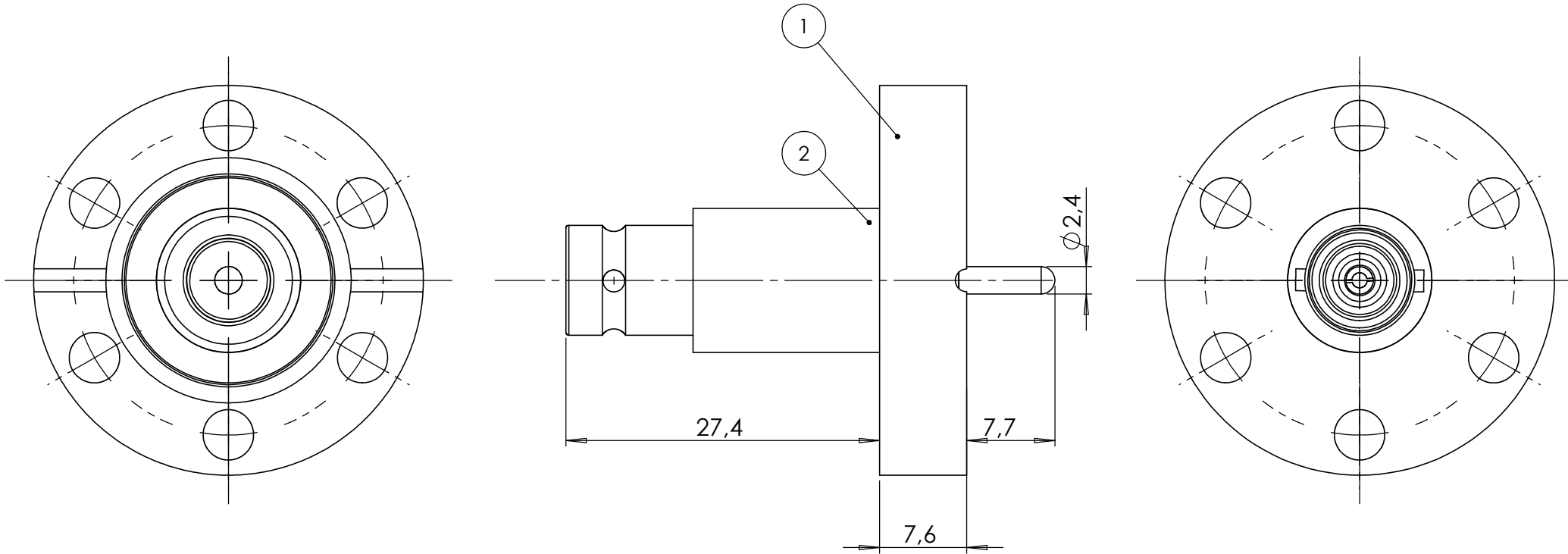
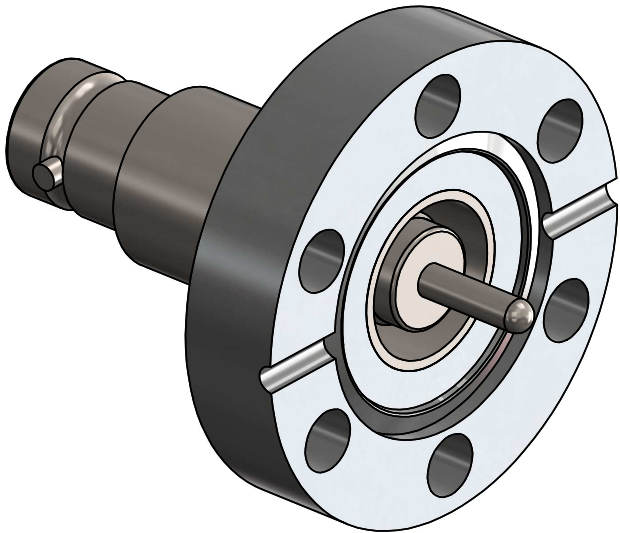


POS. NO.	DESCRIPTION	MATERIAL	QTY
1	modified flange DN16 CF	1.4404 (316L)	1
2	coaxial f/t type MHV, 5KV, 3A, grounded shield, weldable	Stainless Steel	1



air side connector included



<1 E-10 mbar*/sec, He, according to DIN EN 1779-A3
Definition Leckprüfung (definiton leak check)

Zeichnung Nutzung (SCOPE OF DRAWING) Drawing external usage for customer		Prüfung Zubehör. (CON + HSG CHECK)		Bemerkung (REMARKS)		Kanten (EDGES)		PROJECTION	
All informations provided in this drawing is considered to be confidential, proprietary and secret information. It is intended only for the use of individual or entity to whom it is sent. Individual or entity agrees to not disseminate or copy this information to anyone other than originally specified without the written consent Allectra GmbH.				Werkstoff (MATERIAL):		Gewicht (WEIGHT):		Toleranz (TOLERANCE)	
				Cleaned UHV- Compatible		g		DIN EN ISO 13920-C (welding ASSY)	
Oberfläche (SURFACE)				Maßstab (SCALE):		Format. (FORM)		PAGE NO	
Cleaned UHV- Compatible				2:1		A4		1	
date				Check		Rauheit (ROUGHNESS)		1	
00 first origin				Approv		Benennung (DESCRIPTION):		1	
name				DATE		NAME		Benennung (DESCRIPTION):	
Allectra standard				21.05.2024		AD		1 off coaxial f/t type MHV	
(drw/doc/sketch)				Design		AD		on flange DN16 CF	
date				Check		JB		Zeich. Nr. (Drw. No.):	
00 first origin				Approv		AD		241-MHV-C16	
REV				Beschreibung (CHANGING)		gesp. am (SAVE DAT.):		22.05.2024	
REV				Beschreibung (CHANGING)		Art. Nr. (PART NO.):		241-MHV-C16	
REV				Beschreibung (CHANGING)		Art. Nr. (PART NO.):		241-MHV-C16	

