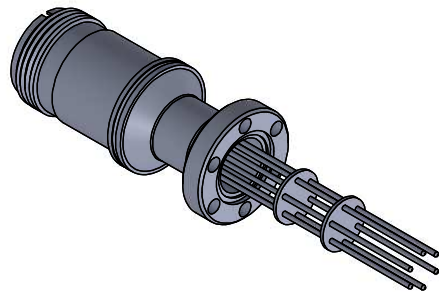


SCALE 1:2

Current: 10 AMPS PIN, 36 AMPS Fully loaded  
 Temperature rating: -100 to 450°C without connector

air side connector are included



Bemerkungen (Remarks)				Freimaßtoleranz (Standard Tolerance)		Maßstab (Scale)	Rauheit (Roughness)		europ. Projektion	
All informations provided in this drawing is considered to be confidential, proprietary and secret information. If is intended only for the use of individual or entity to whom it is sent. Individual or entity agrees to not disseminate or copy this information to anyone other than originally specified without the written consent Alletra GmbH.				Datum		Name	Material, Standard Oberfläche (Treatment)		Kanten (edges)	
				Design	06.12.2021	AD	Bezeichnung (Title) <b>1 off multy pins f/t, 6 pins, 10A, 700V on flange DN16 CF</b>		Gewicht (weight) <b>g</b>	
				Drawn	06.12.2021	AD			15.42	
				Check					Page: <b>1</b>	Pages: <b>1</b>
						Zeichnungsnummer (Drawing No.)		Revision		
						221-10AL700-6-C16				
Index	Modification	Date	Name	Datei (File)		C:\PDM-Store\C:\PDM-Store\		Format <b>A4</b>		