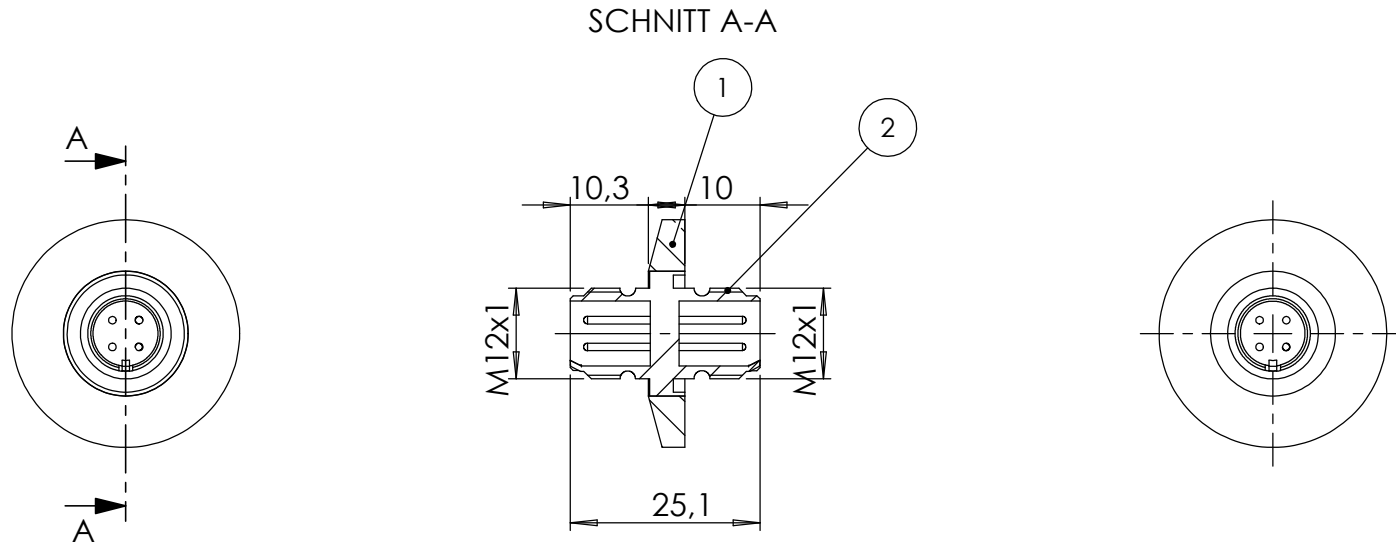
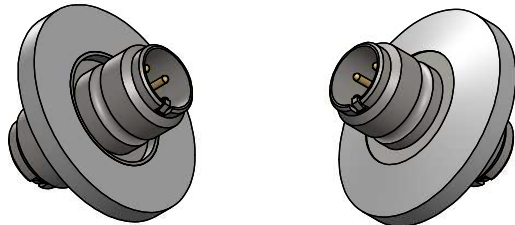


POS-NR.	DESCRIPTION	MATERIAL	QTY
1	modified flange KF16	1.4301 (304)	1
2	4 pin M12x4 feedthrough	Stainless Steel	1



only use with outer centerring ring



Bemerkungen (Remarks)				Freimaßtoleranz (Standard Toleranz)		Maßstab (Scale)	Rauheit (Roughness)		europ.Projektion		
All informations provided in this drawing is considered to be confidential, proprietary and secret information. If is intended only for the use of individual or entity to whom it is sent. Individual or entity agrees to not disseminate or copy this information to anyone other than originally specified without the written consent Allectra GmbH.						1:1					
				Datum							Name
				Design			26.02.2019	FW		Material, Standard Oberfläche (Treatment)	
Drawn		26.02.2019	FW		Bezeichnung (Title)		Gewicht (weight) g				
Check					M12X4 feedthrough on flange DN16 KF		28.48				
							Page: 1 Pages: 1				
						Zeichnungsnummer (Drawing No.) 220-M12X4-K16				Revision	
Index		Modification				Datum		Name		Format A4	
						Datei (File) C:\PDMStore\C:\PDMStore\					