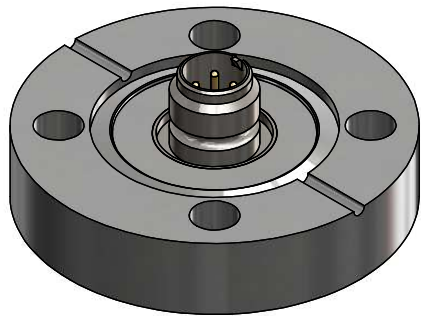
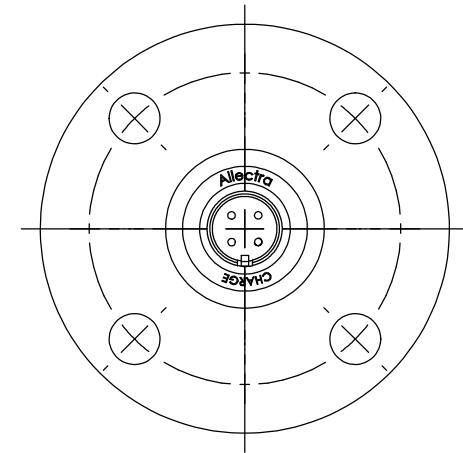
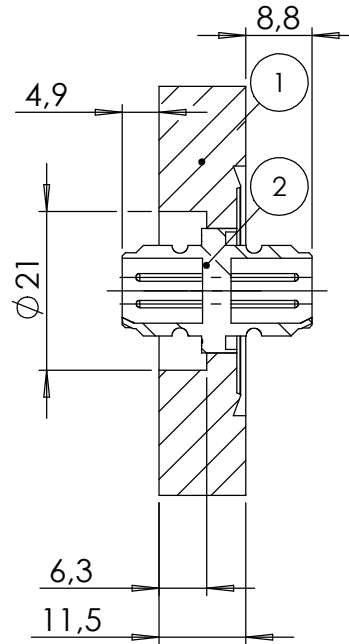
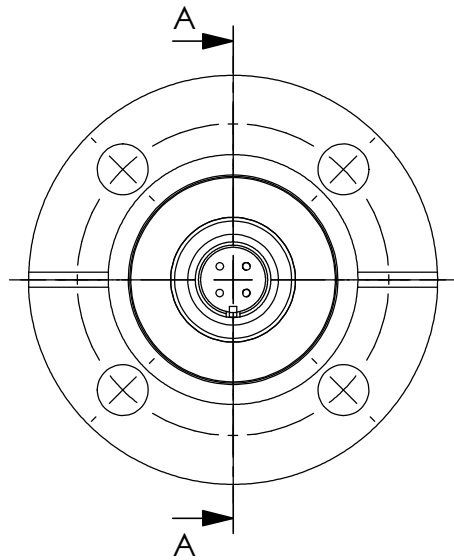


POS-NR.	DESCRIPTION	MATERIAL	QTY
1	modified flange DN25 CF	1.4306 (304L)	1
2	4 pin M12x4 feedthrough	Stainless Steel	1

SECTION A-A



Bemerkungen (Remarks)				Freimaßtoleranz (Standard Tolerance)		Maßstab (Scale)	Rauheit (Roughness)	europ.Projektion
All informations provided in this drawing is considered to be confidential, proprietary and secret information. If is intended only for the use of individual or entity to whom it is sent. Individual or entity agrees to not disseminate or copy this information to anyone other than originally specified without the written consent Alectra GmbH.				Datum		Name	Material, Standard Oberfläche (Treatment)	Kanten (edges)
Design				03.01.2022		AD	1 off M12X4 f/t on flange DN25 CF	Gewicht (weight)
Drawn				03.01.2022		AD		177.09
Check								Page: 1
							Zeichnungsnummer (Drawing No.)	Revision
							220-M12X4-C25	
Index				Modification		Date	File (File)	Format A4
							C:\PDM-Store\C:\PDM-Store\	