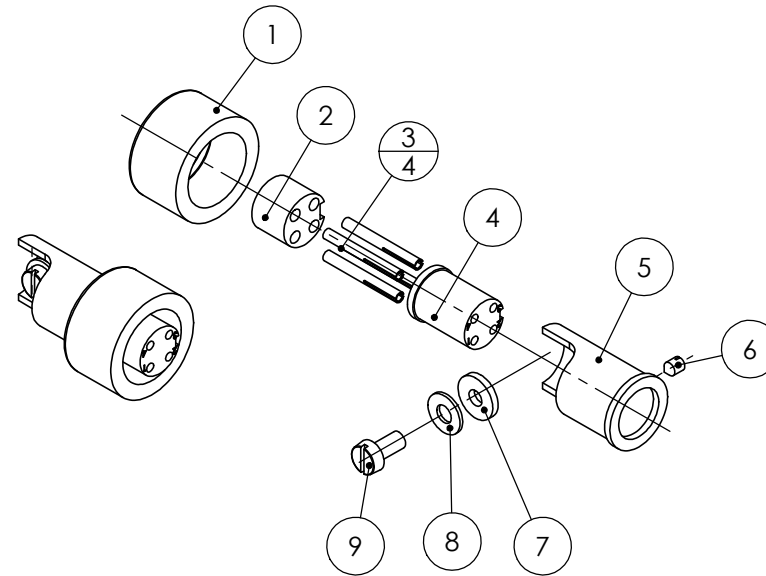
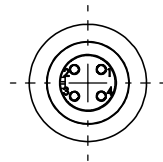
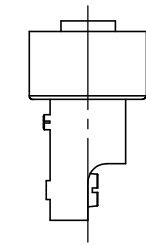
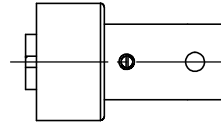
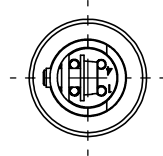
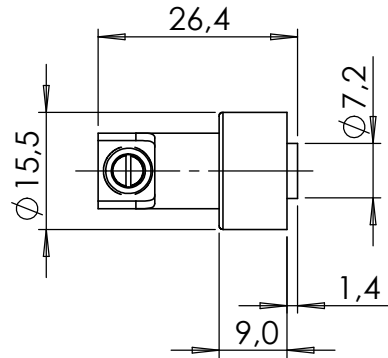
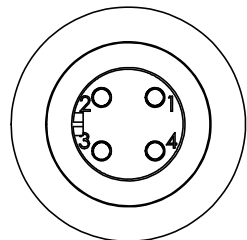


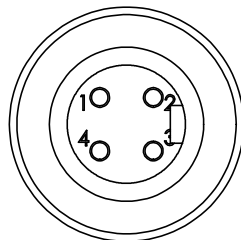
POS-NR.	DESCRIPTION	MATERIAL	QTY
1	Housing Nut	6026LF(AlMgSiBi)	1
2	Back Plate	PEEK	1
3	pin female d=1 mm	2.1247 (CuBe2) gold plated	4
4	Front Plate	PEEK	1
5	strain relief housing	1.4404 (316L)	1
6	ISO 7434 - M2 x 3-N	1.4301	1
7	Pad Washer	VITON	1
8	Washer DIN 125 - A 2.7	Stainless Steel	1
9	ISO 1207 - M2.5 x 5 --- 5N	Stainless Steel	1



front side  
S 2:1



back side  
S 2:1



Bemerkungen (Remarks)				Freimaßtoleranz (Standard Toleranz)	Maßstab (Scale)	Rauheit (Roughness)	europ.Projektion	
All informations provided in this drawing is considered to be confidential, proprietary and secret information. It is intended only for the use of individual or entity to whom it is sent. Individual or entity agrees to not disseminate or copy this information to anyone other than originally specified without the written consent Alletra GmbH.				Datum	Name			
				Design	16.12.2013			FW
				Drawn	28.09.2022			AD
Index				<b>alletra</b>		Material, Standard Oberfläche (Treatment)	Kanten (edges) $L_{\pm 0.1}$ $L_{0.25}$	
Modification				Bezeichnung (Title) <b>Connector 4pin, UHV Type M12</b>		Gewicht (weight) <b>233.84</b>	Page: 1 Pages: 3	
Datum				Zeichnungsnummer (Drawing No.) <b>220-CON-M12X4-UHV</b>		Revision		
Name				Datei (File) C:\PDM_Alletra\SEC02\220\220-CON\C:\PDM_Alletra\SEC02\220\220-CON		Format <b>A4</b>		