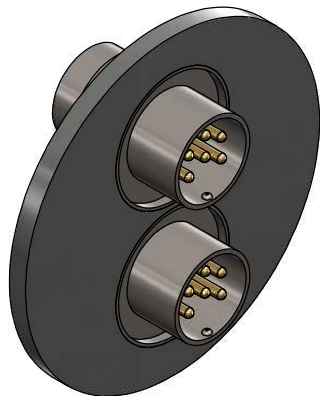
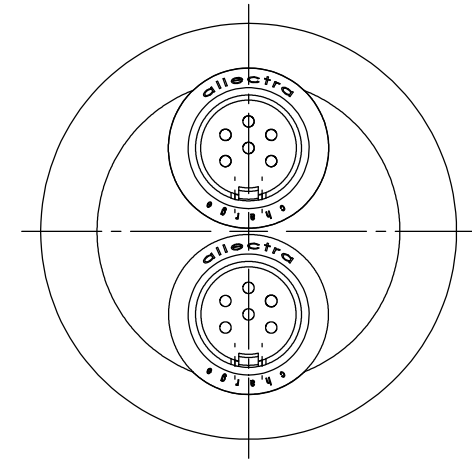
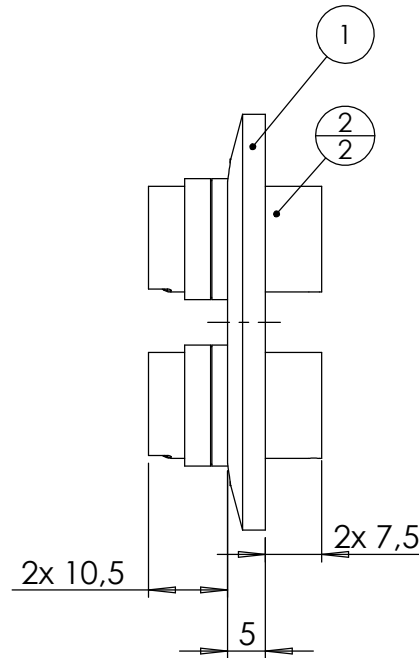
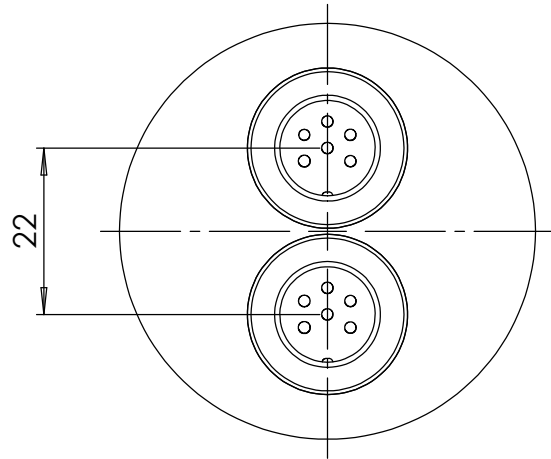


POS-NR.	DESCRIPTION	MATERIAL	QTY
1	modified flange DN40 KF	1.4301 (304)	1
2	6 pin feedthrough, type CM, weldable	Stainless Steel / Glas Ceramic	2



Bemerkungen (Remarks)				Freimaßtoleranz (Standard Tolerance)		Maßstab (Scale)	Rauheit (Roughness)	europ.Projektion	
All informations provided in this drawing is considered to be confidential, proprietary and secret information. If is intended only for the use of individual or entity to whom it is sent. Individual or entity agrees to not disseminate or copy this information to anyone other than originally specified without the written consent Allectra GmbH.				Datum		Name	Material, Standard Oberfläche (Treatment)	Kanten (edges)	
									Gewicht (weight)
Design				07.04.2022	AD	Bezeichnung (Title)	2 off circular multipin CM f/t , 6 pins on flange DN40 KF	Gewicht (weight)	g
Drawn				07.04.2022	AD			1	1
Check								1	1
Index				Modification	Date	Name	Zeichnungsnummer (Drawing No.)		Revision
						allectra		220-CM6-K40-2	
						Datei (File)		C:\PDM-Store\I:\PDM-Store\	
								Format A4	