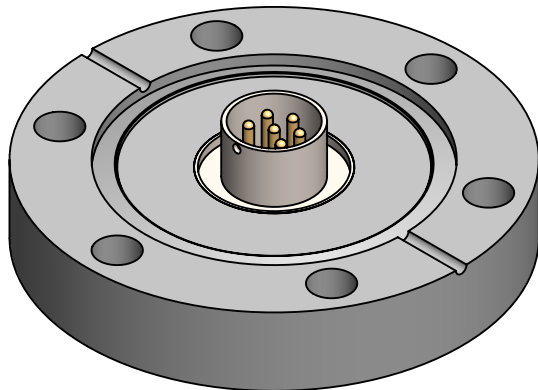
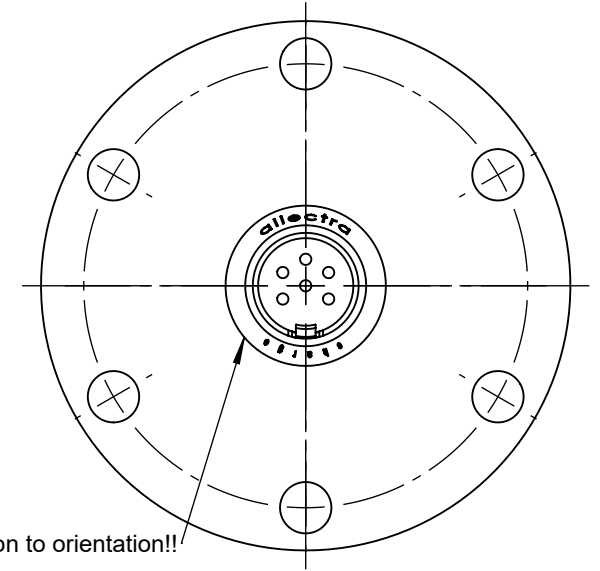
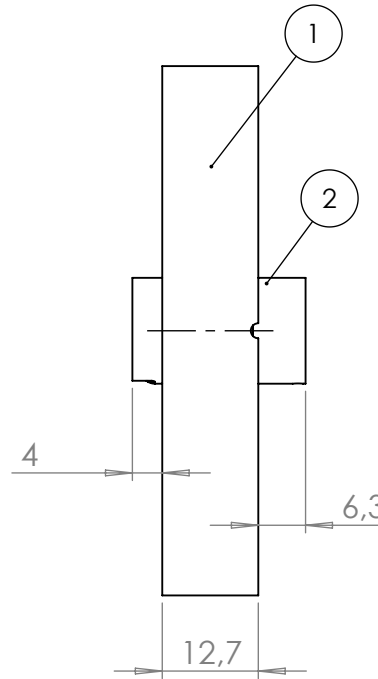
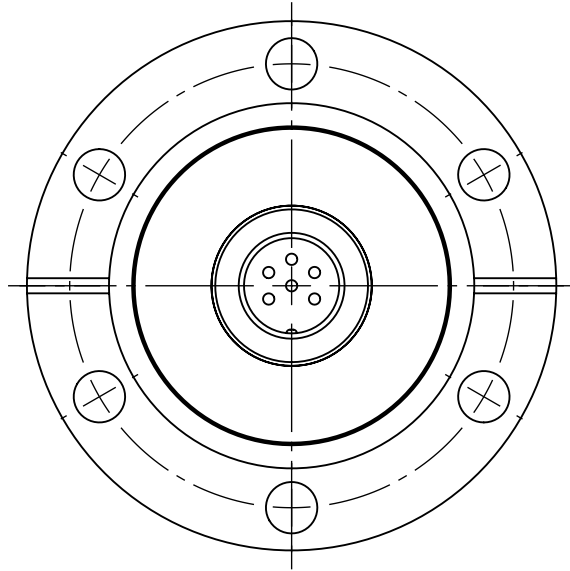


POS. NO.	DESCRIPTION	MATERIAL	QTY
1	modified flange DN40 CF	1.4404 (316L)	1
2	6 pin feedthrough, type CM, weldable	Stainless Steel / Glas Ceramic	1



<1 E-10 mbar\*/l/sec, according to DIN EN 1779-A3  
Definition Leckprüfung (definon leak check)

Zeichnung Nutzung (SCOPE OF DRAWING) Drawing external usage for customer		Verwendetes Material (USED MATERIAL)		Bemerkung (REMARKS)		Kanten (EDGES)		PROJECTION	
All informations provided in this drawing is considered to be confidential, proprietary and secret information. It is intended only for the use of individual or entity to whom it is sent. Individual or entity agrees to not disseminate or copy this information to anyone other than originally specified without the written consent Allectra GmbH.		Werkstoff (MATERIAL): Gewicht (WEIGHT): g		Toleranz (TOLERANCE) DIN EN 13920-C (welding ASSY)					
		Oberfläche (SURFACE) Cleaned UHV- Compatible		Maßstab (SCALE): 1:1					
origin		name Allectra standard		DATE		NAME		Benennung (DESCRIPTION):	
(drw/doc/sketch)				Design 09.04.2024		AD		1 off CM6 f/t on flange DN40 CF	
date		REV		Drawn 09.04.2024		AD			
00		first origin		Check 09.04.2024		JB			
				Approv 09.04.2024		AD		Zeich. Nr. (Drw. No.): 220-CM6-C40	
REV		Beschreibung (CHANGING)		gesp. am (SAVE DAT.): 09.04.2024		Art. Nr. (PART NO.): 220-CM6-C40		REV 00	

