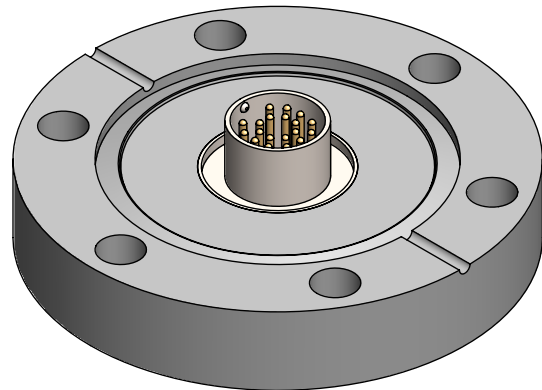
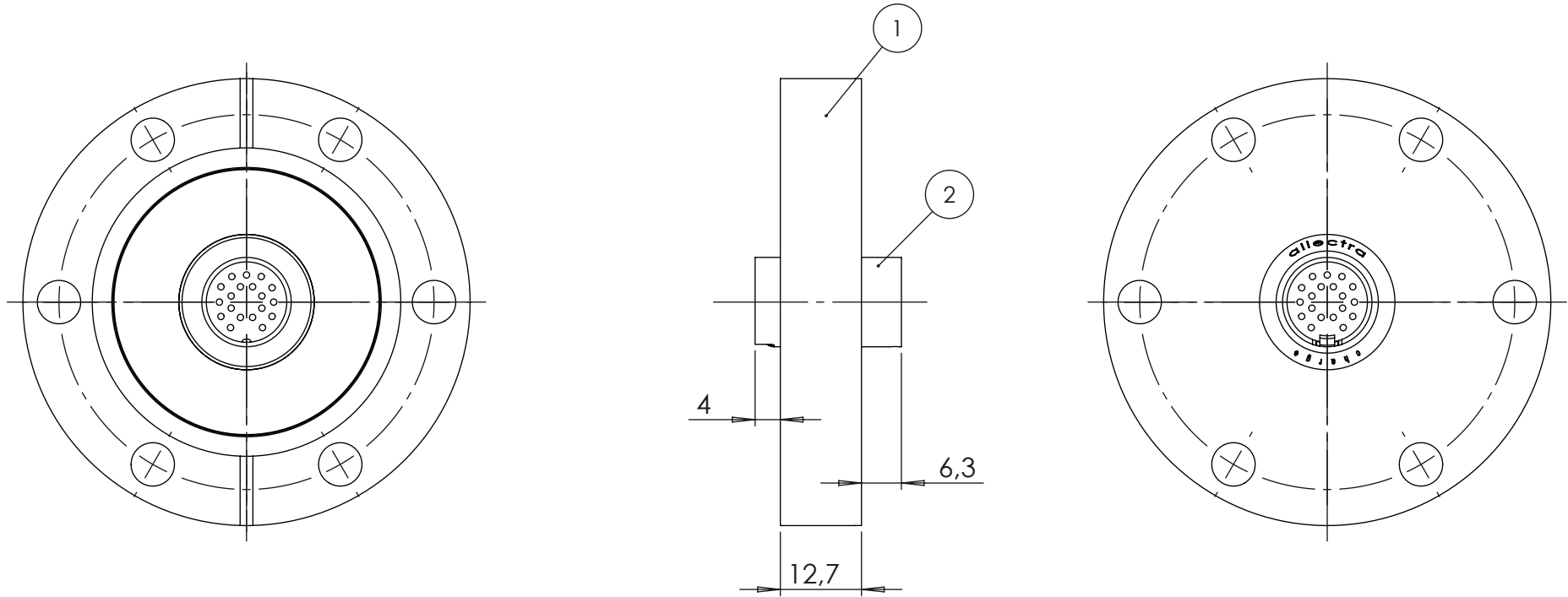


POS. NO.	DESCRIPTION	MATERIAL	QTY
1	modified flange DN40 CF	1.4404 (316L)	1
2	19 pin feedthrough, type CM, weldable	Stainless Steel / Glas Ceramic	1



<1 E-10 mbar*/sec, He, according to DIN EN 1779-A3
Definition Leckprüfung (definon leak check)

Zeichnung Nutzung (SCOPE OF DRAWING) Drawing external usage for customer		Prüfung Zubehör. (CON + HSG CHECK)		Bemerkung (REMARKS)		Kanten (EDGES)		PROJECTION	
All informations provided in this drawing is considered to be confidential, proprietary and secret information. It is intended only for the use of individual or entity to whom it is sent. Individual or entity agrees to not disseminate or copy this information to anyone other than originally specified without the written consent Allectra GmbH.		Werkstoff (MATERIAL): Gewicht (WEIGHT):		Toleranz (TOLERANCE) DIN EN ISO 13920-C (welding ASSY)					
		Oberfläche (SURFACE) Cleaned UHV- Compatible							
origin	name	Allectra standard		DATE	NAME		Benennung (DESCRIPTION): 1 off CM19 f/t on flange DN40 CF		
	(drw/doc/sketch)			Design	27.01.2025	AD			
	date			Drawn	27.01.2025	AD			
				Check	27.01.2025	JB			
00	first origin			Approv	27.01.2025	AD	Zeich. Nr. (Drw. No.): 220-CM19-C40		REV 00
REV	Beschreibung (CHANGING)	gesp. am (SAVE DAT.): 27.01.2025				Art. Nr. (PART NO.) 220-CM19-C40			