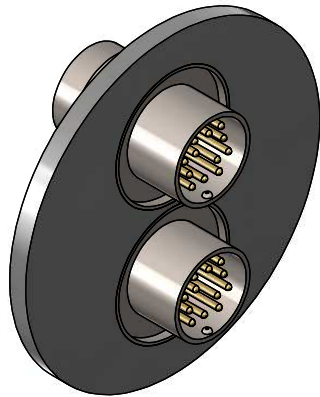
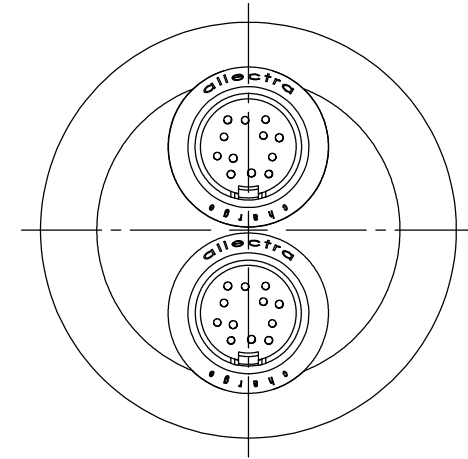
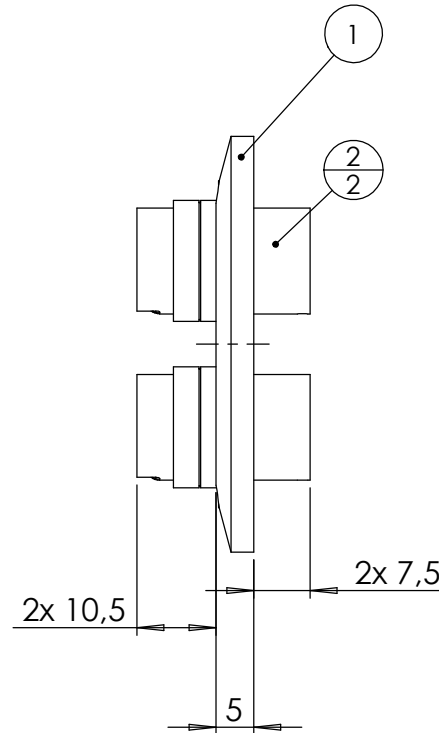
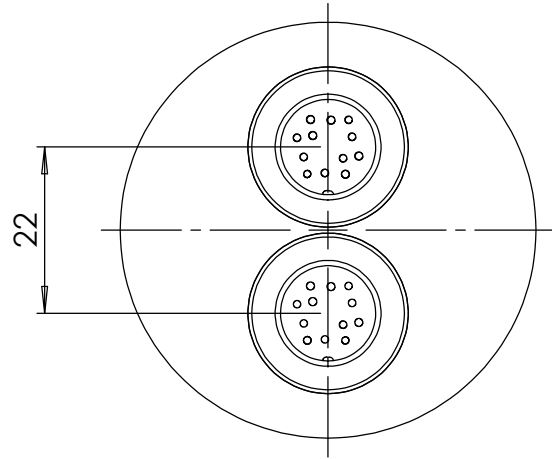


POS-NR.	DESCRIPTION	MATERIAL	QTY
1	modified flange DN40 KF	1.4301 (304)	1
2	12 pin feedthrough, type CM, weldable	Stainless Steel / Glas Ceramic	2



Bemerkungen (Remarks)				Freimaßtoleranz (Standard Tolerance)		Maßstab (Scale)	Rauheit (Roughness)	europ.Projektion	
All informations provided in this drawing is considered to be confidential, proprietary and secret information. If is intended only for the use of individual or entity to whom it is sent. Individual or entity agrees to not disseminate or copy this information to anyone other than originally specified without the written consent Alletra GmbH.				Datum		Name	Material, Standard Oberfläche (Treatment)	Kanten (edges)	
Design				07.04.2022		AD		2 off circular multipin CM f/t , 12 pins on flange DN40 KF	
Drawn				07.04.2022		AD		87.46	
Check								Page: 1 Pages: 1	
								Revision	
								Format A4	
Index				Modification		Date		Name	
								Datei (File) C:\PDM-Store\IC\IPDM-Store\	
								Zeichnungsnummer (Drawing No.) 220-CM12-K40-2	
								alletra	