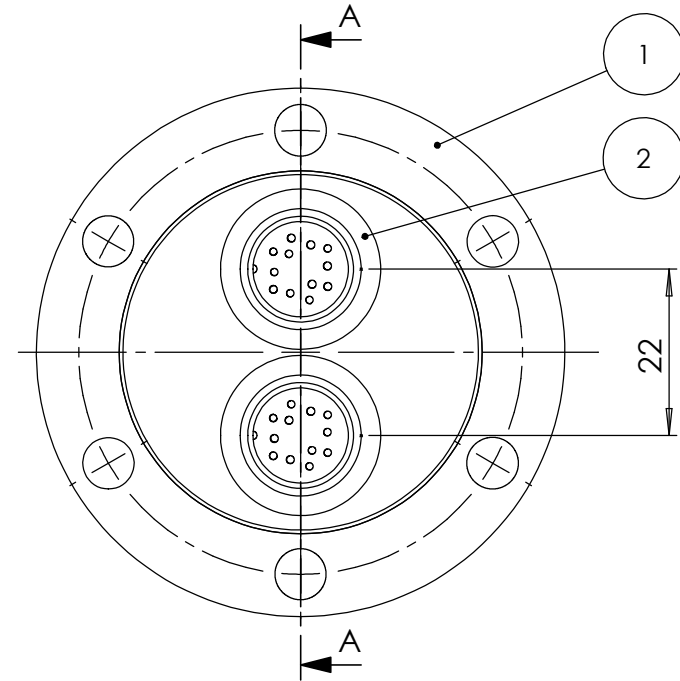
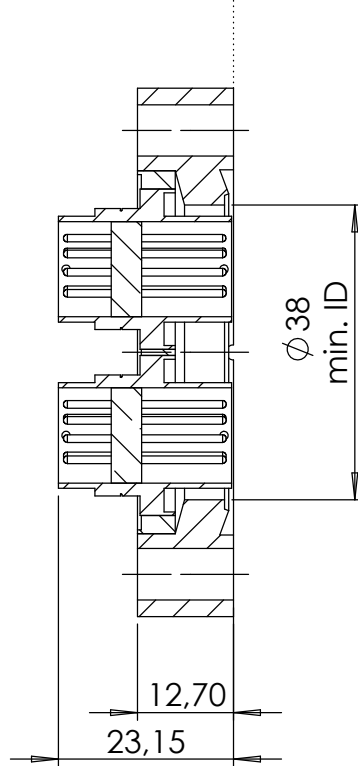


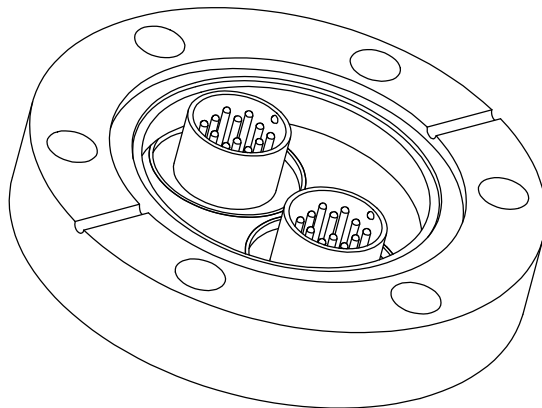
POS-NR.	DESCRIPTION	MATERIAL	QTY
1	Special Flange DN40 CF	1.4404	1
2	12 pin Feedthrough	Stainless Steel / Glas Ceramic	2

Air Vacuum

SCHNITT A-A



Please use with only Screws DIN 912.
They are including (6 of Screws DIN 912 - M6x35).



Bemerkungen (Remarks)				Freimaßtoleranz (Standard Toleranz)		Maßstab (Scale)	Rauheit (Roughness)	europ.Projektion			
All informations provided in this drawing is considered to be confidential, proprietary and secret information. If is intended only for the use of individual or entity to whom it is sent. Individual or entity agrees to not disseminate or copy this information to anyone other than originally specified without the written consent Alletra GmbH.						1:1					
								Material, Standard		Kanten (edges)	
								Oberfläche (Treatment)			
				Datum	Name	Bezeichnung (Title)		Gewicht (weight) g			
				Design	27.03.2009	JB	2 of 12 pin Feethrough onto Flange DN40 CF		248.20		
				Drawn	17.10.2014	FW			Page:	Pages:	
				Check	20.10.2014				1	1	
						Zeichnungsnummer (Drawing No.)		Revision			
						220-CM12-C40-2					
Index	Modification	Datum	Name	Datei (File)		C:\PDMStore\C\PDMStore\		Format A4			