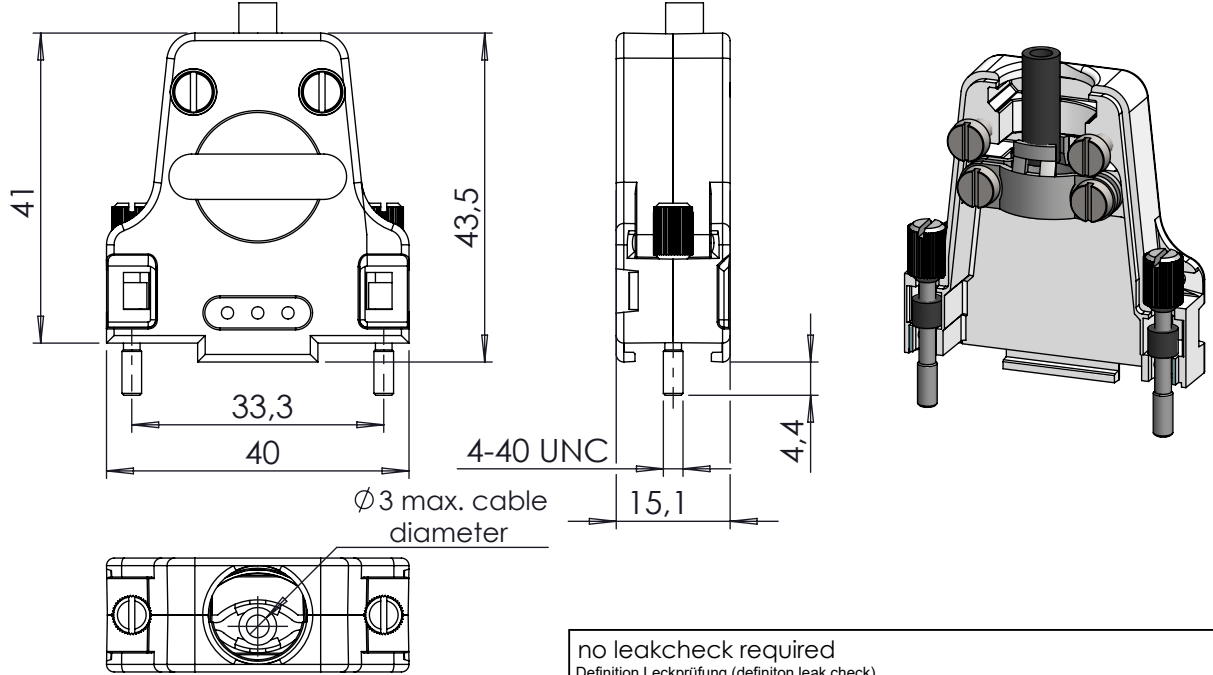
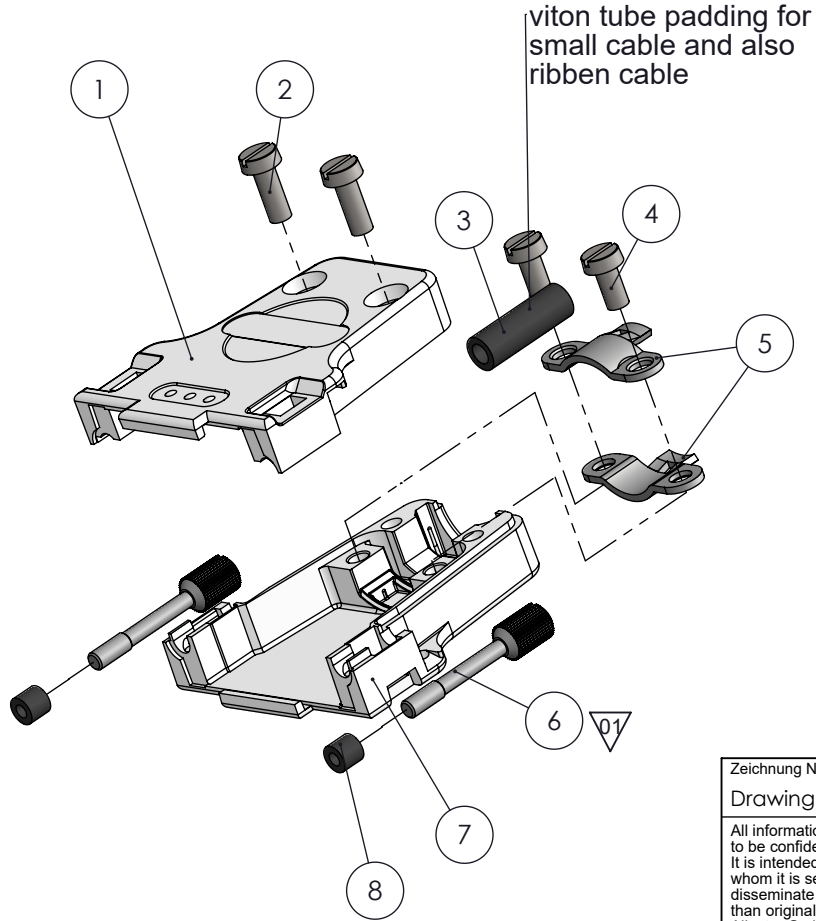


POS. NO.	DESCRIPTION	MATERIAL	QTY
1	housing top part SUB-D 15 pin	Zinc alloy / Nickel plated	1
2	ISO 1207 - M3 x 8 --- 8N	Stainless Steel	2
3		VITON	1
4	ISO 1207 - M3 x 6 --- 6N	Stainless Steel	2
5	cable clamp 15	Steel Nickel plated	2
6	screw 4-40 UNC	1.4305 (303)	2
7	housing bottom part SUB-D 15 pin	Zinc alloy / Nickel plated	1
8	viton tube 2x3.5	VITON	2



no leakcheck required
Definition Leckprüfung (definitor leak check)

Zeichnung Nutzung (SCOPE OF DRAWING) Drawing external usage for customer		Prüfung Zubehör. (CON + HSG CHECK)		Bemerkung (REMARKS)		Kanten (EDGES)		PROJECTION		
All informations provided in this drawing is considered to be confidential, proprietary and secret information. It is intended only for the use of individual or entity to whom it is sent. Individual or entity agrees to not disseminate or copy this information to anyone other than originally specified without the written consent Alletra GmbH.		Werkstoff (MATERIAL): Gewicht (WEIGHT):		Toleranz (TOLERANCE)						
		Oberfläche (SURFACE) Cleaned UHV- Compatible		Maßstab (SCALE): 1:1						Format. (FORM) A4
origin		DATE		NAME		Benennung (DESCRIPTION):				
name Alletra standard		Design 19.11.2015		FW		housing for HV-SUB-D connector 15 pin strain relief				
(drw/doc/sketch)		Drawn 06.05.2024		AD						
date		Check 06.05.2024		JB						
01		Pos.Nr 6 material changed		Approv 06.05.2024		AD		Zeich. Nr. (Drw. No.): 211-HSG-D15-SR-V3		REV 01
REV Beschreibung (CHANGING)		gesp. am (SAVE DAT.): 06.05.2024		Art. Nr. (PART NO.) 211-HSG-D15-SR-V3						

