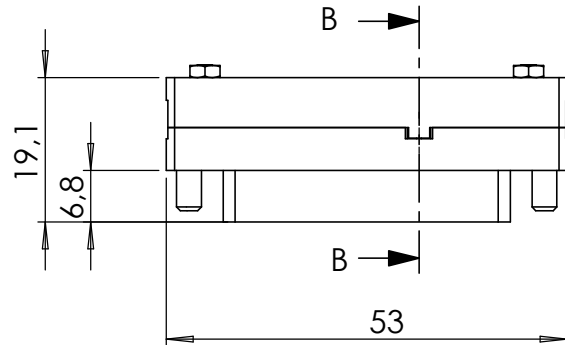
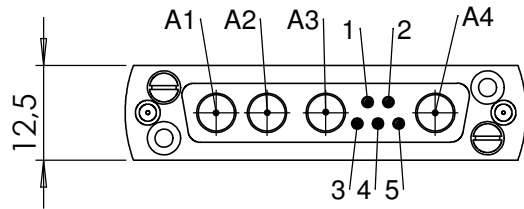
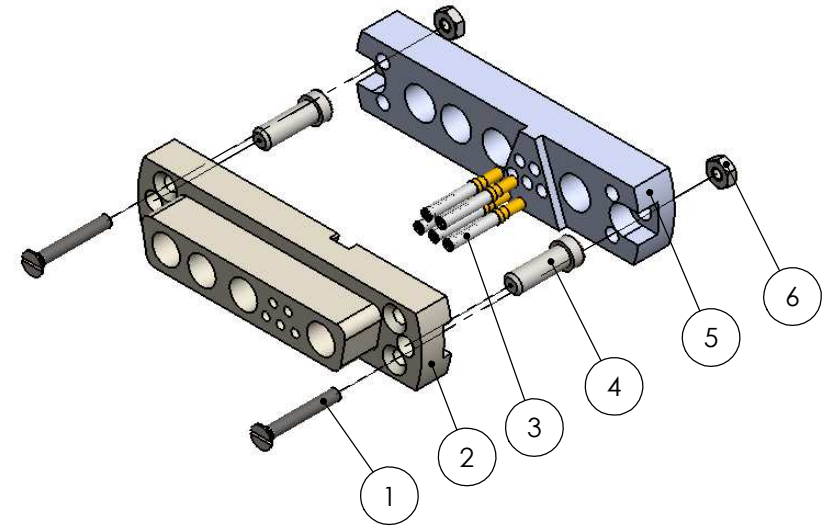
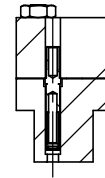


POS-NR.	DESCRIPTION	MATERIAL	QTY
1	Countersunk Screw M2X14	Stainless Steel	2
2	Front Plate for UHV-Connector	PEEK	1
3	Standard SUB-D Crimp Pin	Copper Alloy Gold plated	5
4	Slotted Cheese Screw 4-40 UNC	1.4301 (X5CrNi18-10)	2
5	Back Plate for UHV-Connector	PEEK	1
6	Hexagon Nut M2 DIN934	Stainless Steel	2

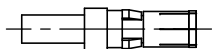


SCHNITT B-B



compatibel contacts not including

contact power
212-POWER-F



contact coax
212-COAX-F



Bemerkungen (Remarks)				Freimaßtoleranz (Standard Toleranz)	Maßstab (Scale)	Rauheit (Roughness)	europ.Projektion
All informations provided in this drawing is considered to be confidential, proprietary and secret information. If is intended only for the use of individual or entity to whom it is sent. Individual or entity agrees to not disseminate or copy this information to anyone other than originally specified without the written consent Allectra GmbH.					1:1		
					Datum	Name	Bezeichnung (Title)
	Design	17.05.2018	JB	female UHV connector for combination SUB-D	9		
	Drawn	23.05.2018	FW		17.26		
	Check				Page: 1 Pages: 1		
				Zeichnungsnummer (Drawing No.)	Revision		
				211-FX25-4X5-PK			
Index	Modification	Datum	Name	allectra		Datei (File) X:\PDM-Store-NHX:\PDM-Store-NHX	Format A4