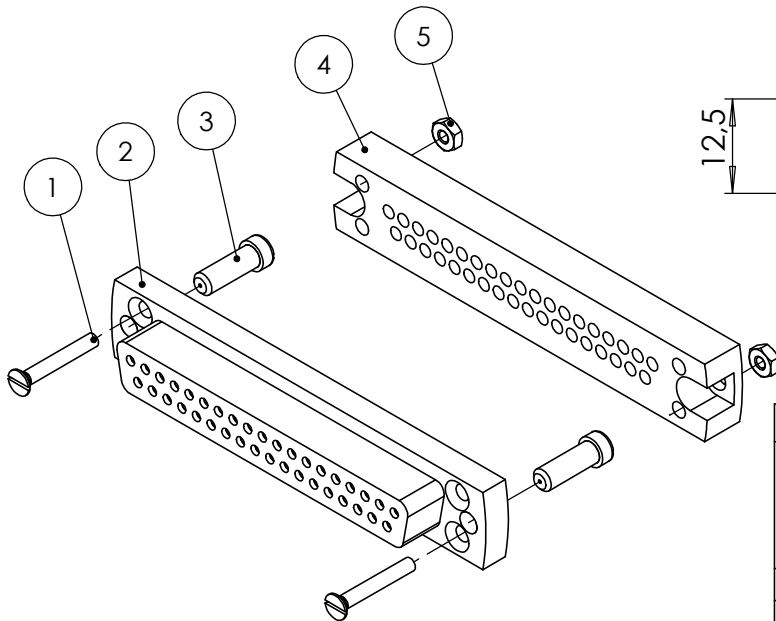
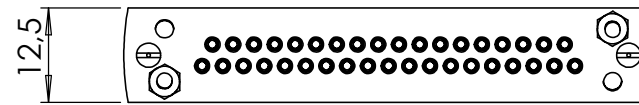
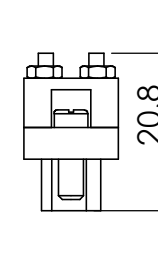
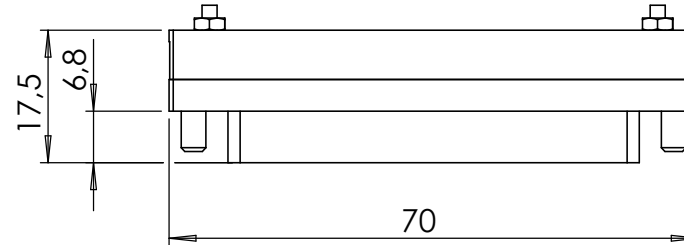
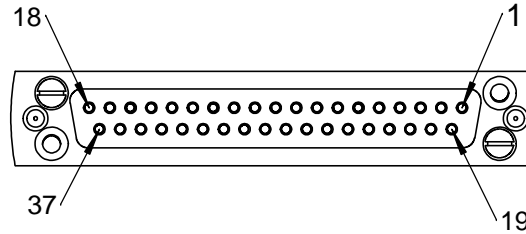


POS-NR.	DESCRIPTION	MATERIAL	QTY
1	Countersunk Screw M2X14	Stainless Steel	2
2	Front Plate for SUB-D 37 Pin	PEEK	1
3	Slotted Cheese Screw 4-40 UNC	1.4301 (X5CrNi18-10)	2
4	Back Plate for SUB-D 37 Pin	PEEK	1
5	Hexagon Nut M2 DIN934	Stainless Steel	2



Bemerkungen (Remarks)				Freimaßtoleranz (Standard Toleranz)		Maßstab (Scale)	Rauheit (Roughness)	europ.Projektion		
All informations provided in this drawing is considered to be confidential, proprietary and secret information. It is intended only for the use of individual or entity to whom it is sent. Individual or entity agrees to not disseminate or copy this information to anyone other than originally specified without the written consent Alletra GmbH.				Datum		1:1				
				Name				Material, Standard Oberfläche (Treatment)	Kanten (edges)	
				Design 28.02.2014 JB				Bezeichnung (Title) UHV connector 37 Pin Standard SUB-D	Gewicht (weight) g	
Drawn 22.06.2016 FW		21.02								
Check		Page: 6		Pages: 10		Revision		Format A4		
Index		Modification		Datum		Name				
Datei (File)		C:\PDMStore\I:\PDMStore\		Zeichnungsnummer (Drawing No.) 211-FS37-PK						