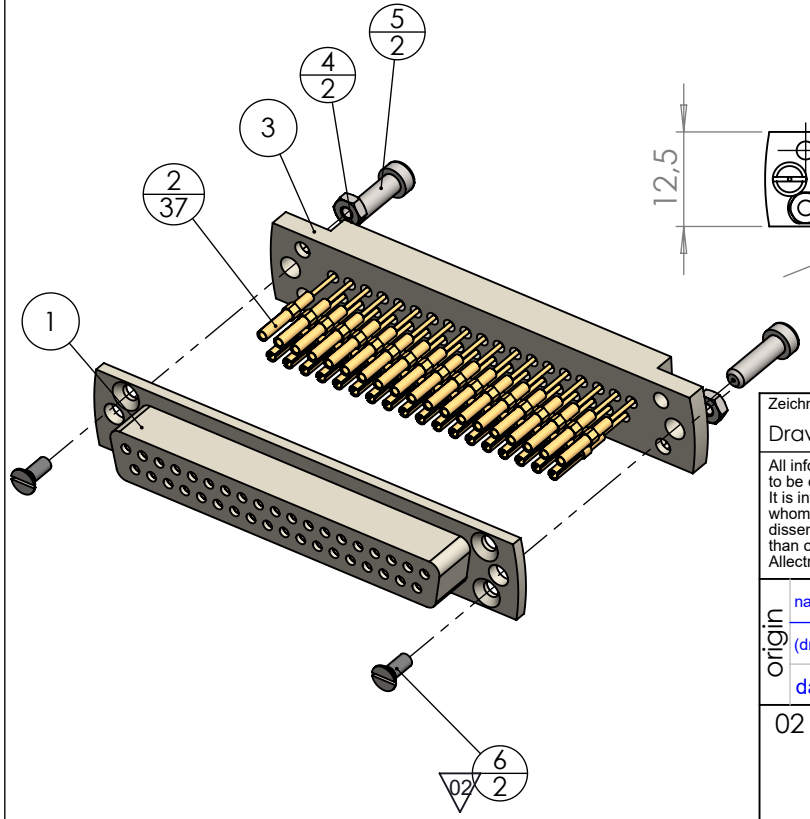
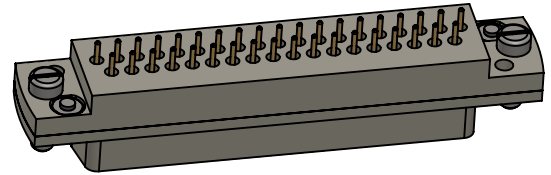
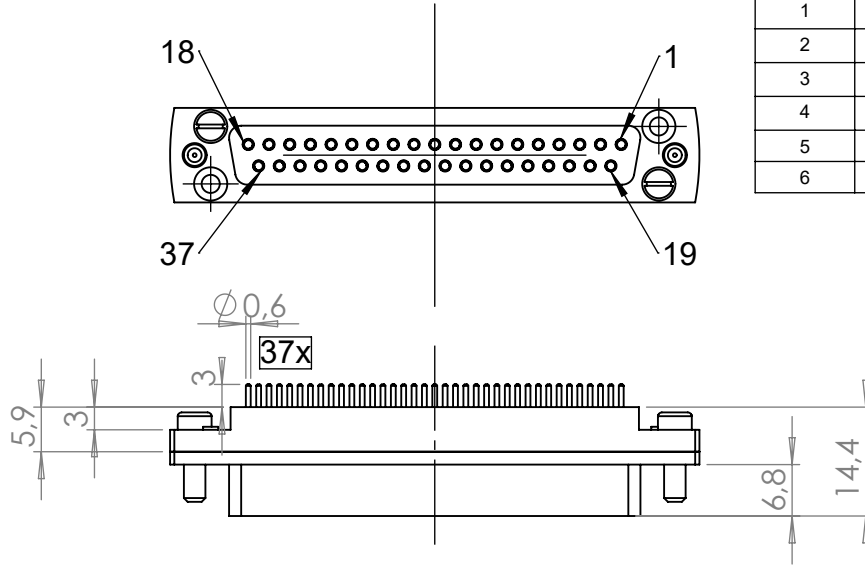


POS.	DESCRIPTION	MATERIAL	QTY
1	front plate, UHV-connector, solder pins	PEEK (Natur)	1
2	solder contact SUB-D female	Copper Alloy Gold plated	37
3	back plate, UHV-connector, solder pins	PEEK (Natur)	1
4	Hexagon Nut M2	Stainless Steel	2
5	screw UNC 4-40, 3/8	1.4301 (X5CrNi18-10)	2
6	screw M2x5	Stainless Steel	2



no leakcheck required  
Definition Leckprüfung (definon leak check)

Zeichnung Nutzung (SCOPE OF DRAWING) Drawing external usage for customer		Prüfung Zubehör. (CON + HSG CHECK)		Bemerkung (REMARKS)		Kanten (EDGES)		PROJECTION	
All informations provided in this drawing is considered to be confidential, proprietary and secret information. It is intended only for the use of individual or entity to whom it is sent. Individual or entity agrees to not disseminate or copy this information to anyone other than originally specified without the written consent Allectra GmbH.		Werkstoff (MATERIAL): Gewicht (WEIGHT): g		Toleranz (TOLERANCE)					
Oberfläche (SURFACE) Cleaned UHV- Compatible		Maßstab (SCALE): 1:1	Format. (FORM) A4	PAGE NO 1	PAGES 1	Rauheit (ROUGHNESS) 			
origin		DATE		NAME		Benennung (DESCRIPTION):			
name Workshop		07.09.2023		AD		UHV connector 37 pin (female), solder pins standard SUB-D			
(drw/doc/sketch)		Design		AD					
date 15.11.2024		18.11.2024		AD					
REV		Check		JB		Zeich. Nr. (Drw. No.): 211-FS37-PK-SC			
02		19.11.2024		AD					
Pos.6 changed		Approv		AD		Art. Nr. (PART NO.) 211-FS37-PK-SC			
REV Beschreibung (CHANGING)		gesp. am (SAVE DAT.):		19.11.2024					

