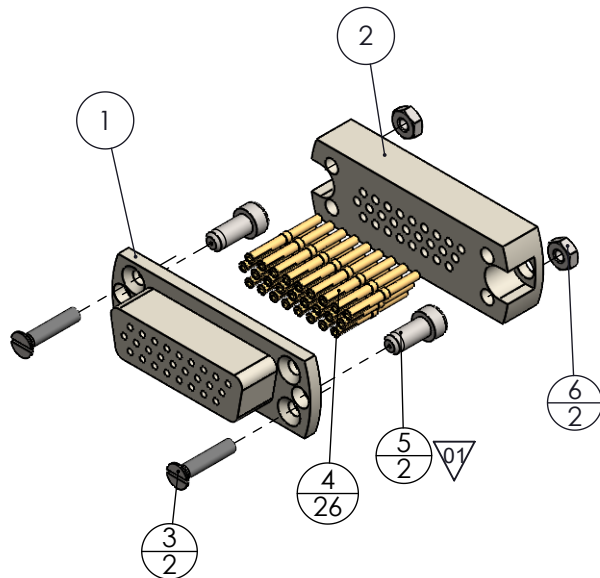
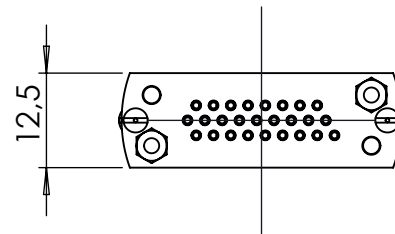
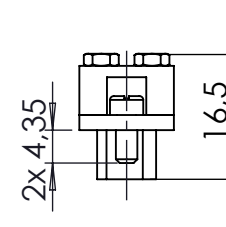
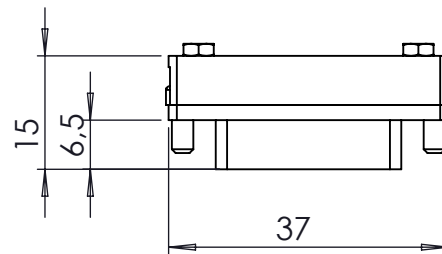
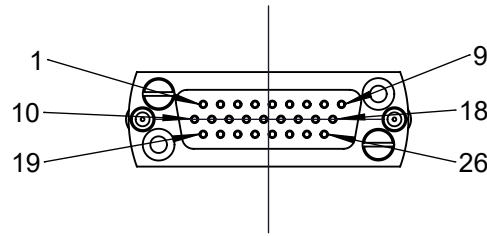


POS. NO.	DESCRIPTION	MATERIAL	QTY
1	front plate for SUB-D 26 Pin female	PEEK (Natur)	1
2	back plate for SUB-D 26 Pin	PEEK (Natur)	1
3	screw M2 x10	Stainless Steel	2
4	crimp pin 0.7mm	Copper Alloy Gold plated	26
5	slotted cheese screw 4-40 UNC, 1/4	1.4301 (X5CrNi18-10)	2
6	hexagon nut M2	Stainless Steel	2



no leakcheck required
Definition Leckprüfung (definiton leak check)

Zeichnung Nutzung (SCOPE OF DRAWING) Drawing external usage for customer		Prüfung Zubehör. (CON + HSG CHECK)		Bemerkung (REMARKS)		Kanten (EDGES)		PROJECTION	
All informations provided in this drawing is considered to be confidential, proprietary and secret information. It is intended only for the use of individual or entity to whom it is sent. Individually or entity agrees to not disseminate or copy this information to anyone other than originally specified without the written consent Allectra GmbH.		Werkstoff (MATERIAL): Gewicht (WEIGHT):		Toleranz (TOLERANCE)					
		Oberfläche (SURFACE) Cleaned UHV- Compatible		Maßstab (SCALE): 1:1					
origin		name Workshop		DATE		Benennung (DESCRIPTION):			
		(drw/doc/sketch) Task: ID-23877		Design 22.10.2024 AD		UHV connector 26 Pin female high density SUB-D			
		date 15.10.2024 REV		Drawn 22.10.2024 AD					
01		Pos5. 5/16 to 1/4 changed		Check 22.10.2024 JB					
				Approv 22.10.2024 AD					
REV		Beschreibung (CHANGING)		gesp. am (SAVE DAT.): 22.10.2024		Zeich. Nr. (Drw. No.): 211-FS26H-PK		REV 01	
						Art. Nr. (PART NO.) 211-FS26H-PK			