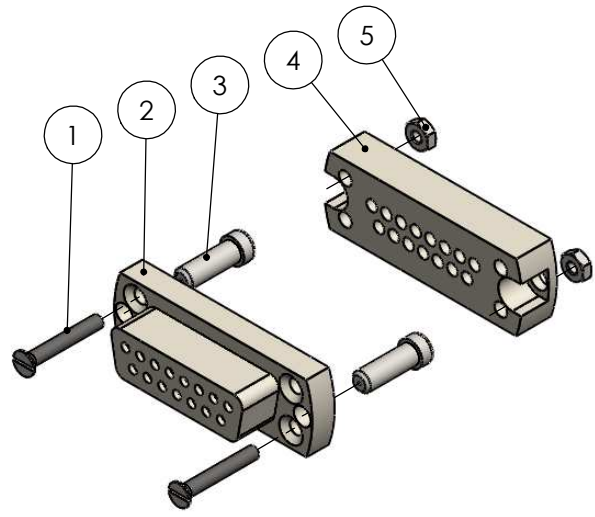
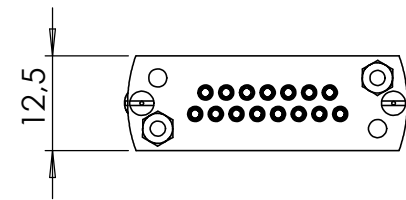
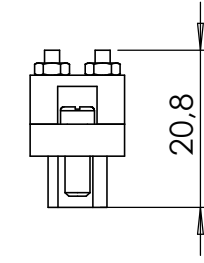
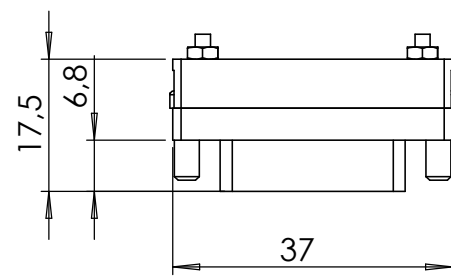
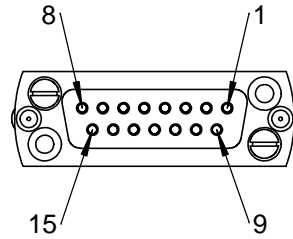


POS-NR.	DESCRIPTION	MATERIAL	QTY
1	Countersunk Screw M2X14	Stainless Steel	2
2	Front Plate for SUB-D 15 Pin	PEEK	1
3	Slotted Cheese Screw 4-40 UNC	1.4301 (X5CrNi18-10)	2
4	Back Plate for SUB-D 15 Pin	PEEK	1
5	Hexagon Nut M2 DIN934	Stainless Steel	2



Bemerkungen (Remarks)			
All informations provided in this drawing is considered to be confidential, proprietary and secret information. It is intended only for the use of individual or entity to whom it is sent. Individual or entity agrees to not disseminate or copy this information to anyone other than originally specified without the written consent Allectra GmbH.			
Index	Modification	Datum	Name

Freimaßtoleranz (Standard Toleranz)	Maßstab (Scale) 1:1	Rauheit (Roughness) 	europ.Projektion
		Material, Standard Oberfläche (Treatment)	Kanten (edges)
Datum Design 28.02.2014 Drawn 22.06.2016 Check	Name JB FW	Bezeichnung (Title) UHV connector 15 pin standard SUB-D	
Zeichnungsnummer (Drawing No.) 211-FS15-PK		Gewicht (weight) 12.03	g
Datei (File) C:\PDMStore\C\PDMStore\		Page: 2	Pages: 10
		Revision	
		Format A4	