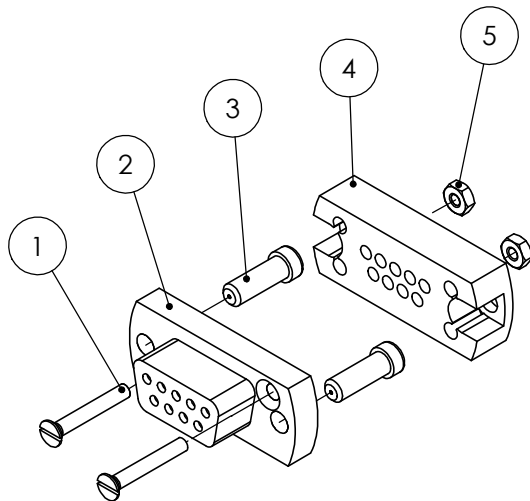
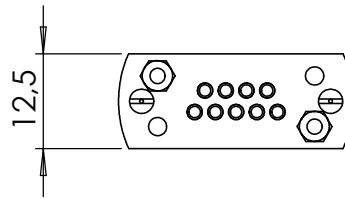
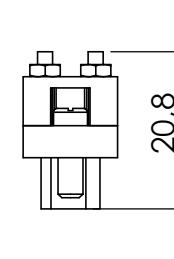
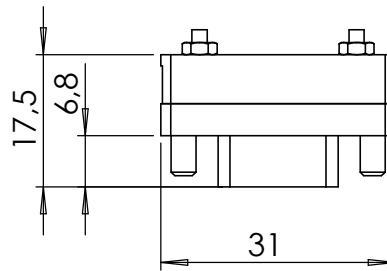
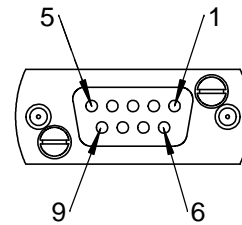


POS-NR.	DESCRIPTION	MATERIAL	QTY
1	Countersunk Screw M2X14	Stainless Steel	2
2	Front Plate for SUB-D 9 Pin	AL2O3	1
3	Slotted Cheese Screw 4-40 UNC	1.4301 (X5CrNi18-10)	2
4	back plate for SUB-D 9pin	AL2O3	1
5	Hexagon Nut M2 DIN934	Stainless Steel	2



Bemerkungen (Remarks)				Freimaßtoleranz (Standard Toleranz)	Maßstab (Scale)	Rauheit (Roughness)	europ.Projektion			
All informations provided in this drawing is considered to be confidential, proprietary and secret information. If is intended only for the use of individual or entity to whom it is sent. Individual or entity agrees to not disseminate or copy this information to anyone other than originally specified without the written consent Allectra GmbH.					1:1					
				Datum				Name	Material, Standard Oberfläche (Treatment)	Kanten (edges)
				Design				23.05.2014	JB	UHV connector 09 Pin Standard SUB-D
Drawn	30.06.2016	FW	12.29							
						Page: 1	Pages: 6			
						Revision				
						Format A4				
Index	Modification	Datum	Name			Zeichnungsnummer (Drawing No.) 211-FS09-UHV				
						Datei (File) C:\PDMStore\C\PDMStore\				