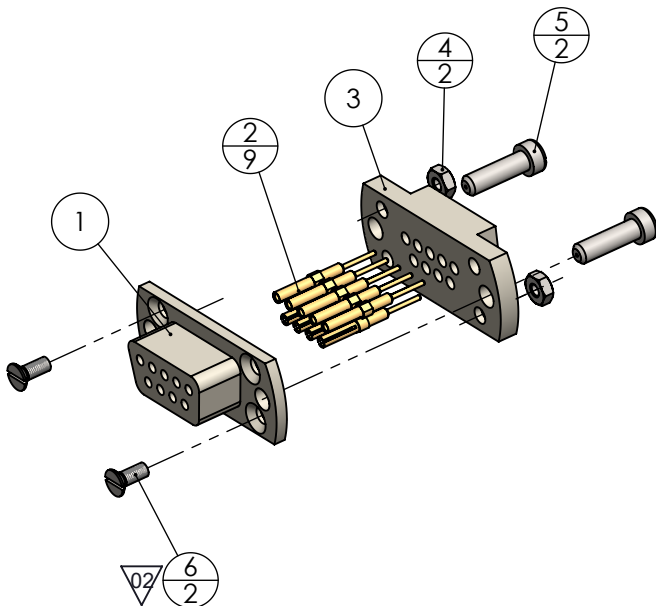
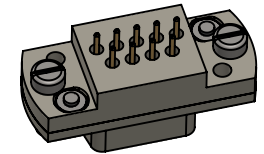
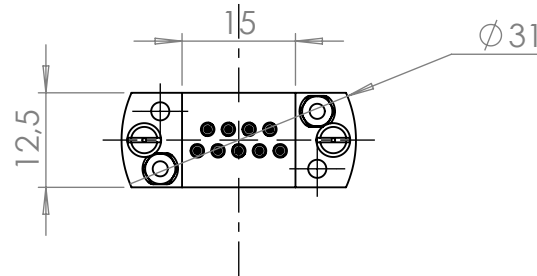
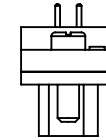
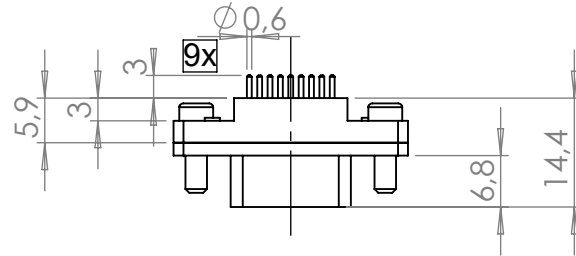
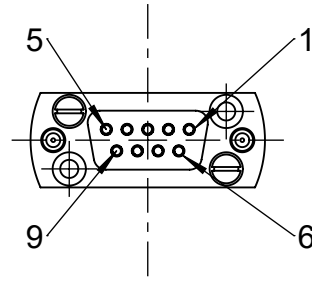


POS.	DESCRIPTION	MATERIAL	QTY
1	front plate, UHV-connector, solder pins	PEEK (Natur)	1
2	solder contact SUB-D female	Copper Alloy Gold plated	9
3	back plate, UHV-connector, solder pins	PEEK	1
4	hexagon Nut M2	Stainless Steel	2
5	screw UNC 4-40, 3/8	1.4301 (X5CrNi18-10)	2
6	screw M2x5	Stainless Steel	2



no leakcheck required Definition Leckprüfung (definiton leak check)				
Bemerkung (REMARKS)		Kanten (EDGES)		PROJECTION
Toleranz (TOLERANCE)		Maßstab (SCALE): 1:1		Format. (FORM) A4
Oberfläche (SURFACE) Cleaned UHV- Compatible		PAGE NO 1	PAGES 1	Rauheit (ROUGHNESS) ✓
Benennung (DESCRIPTION): UHV connector 9 pin (female), solder pins standard SUB-D				
Zeich. Nr. (Drw. No.): 211-FS09-PK-SC				REV 02
Art. Nr. (PART NO.) 211-FS09-PK-SC				

Zeichnung Nutzung (SCOPE OF DRAWING) Drawing external usage for customer		Prüfung Zubehör. (CON + HSG CHECK)	
All informations provided in this drawing is considered to be confidential, proprietary and secret information. It is intended only for the use of individual or entity to whom it is sent. Individually or entity agrees to not disseminate or copy this information to anyone other than originally specified without the written consent Allectra GmbH.		Werkstoff (MATERIAL):	Gewicht (WEIGHT):
origin		DATE	NAME
name Workshop		Design 07.09.2023	AD
(drw/doc/sketch)		Drawn 18.11.2024	AD
date 15.11.2024		Check 19.11.2024	JB
02 Pos.6 changed		Approv 19.11.2024	AD
REV Beschreibung (CHANGING)		gesp. am (SAVE DAT.): 19.11.2024	

