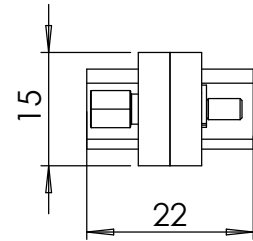
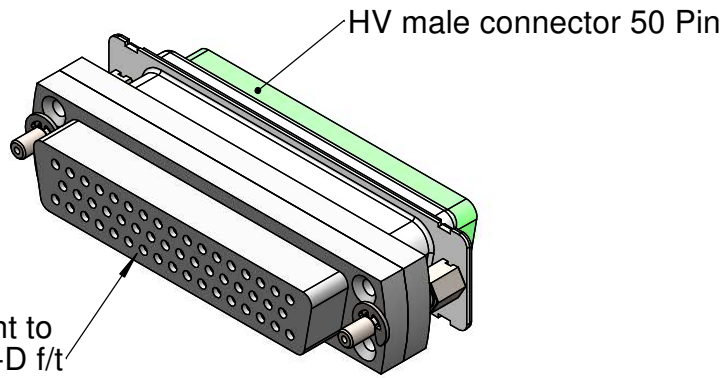
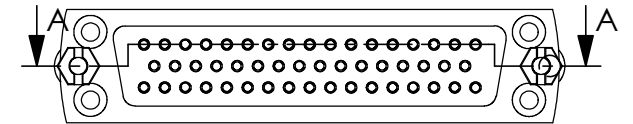


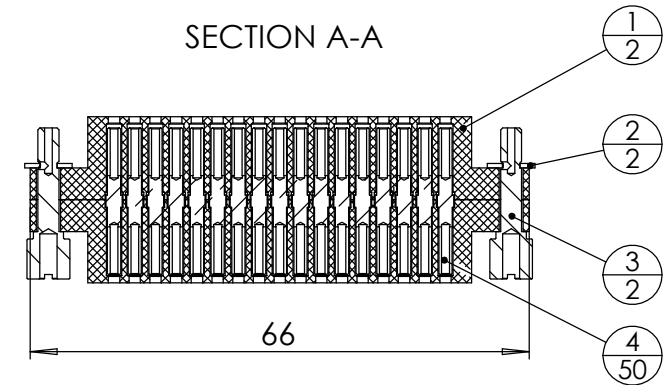
gender adapter in combination with 211-MS50-HV



POS-NR.	DESCRIPTION	MATERIAL	QTY
1	front plate for SUB-D 50 Pin	Glass Ceramic	2
2	903-SICHRING-D3,2	Stainless Steel	2
3	SUB-D Screw 4-40 UNC	1.4841 (X15CrNiSi25-21)	2
4	Female SUB-D Contact	2.1247 (CuBe2) gold plated	50

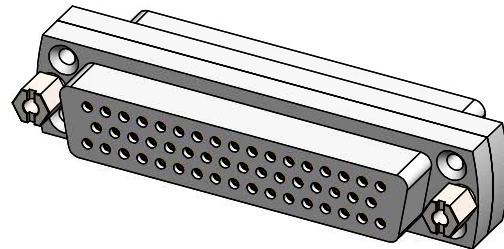


SECTION A-A

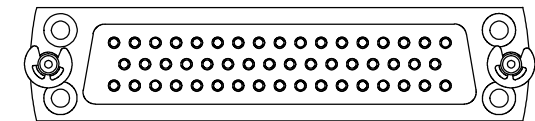
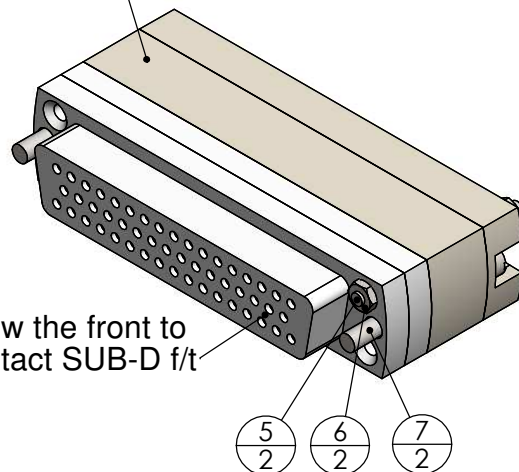


gender adapter in combination with 211-MS50-PK or 211-MS50-UHV

POS-NR.	DESCRIPTION	Material	QTY
5	Countersunk Screw M2X10	Stainless Steel	2
6	Hexagon Nut M2 DIN934	Stainless Steel	2
7	Screw 4-40 UNC	Stainless Steel	2



UHV / PEEK male connector 50 pin



Bemerkungen (Remarks)				Freimaßtoleranz (Standard Toleranz)		Maßstab (Scale)	Rauheit (Roughness)		europ.Projektion			
All informations provided in this drawing is considered to be confidential, proprietary and secret information. If it is intended only for the use of individual or entity to whom it is sent. Individual or entity agrees to not disseminate or copy this information to anyone other than originally specified without the written consent Alectra GmbH.						1:1						
				Datum							Name	
				Design 05.08.2020							AD	
Drawn 06.08.2020		AD		Check		Material, Standard Oberfläche (Treatment)		Kanten (edges)				
Bezeichnung (Title)							Gewicht (weight)		g			
Gender adapter 50 pin ceramic version							40.29		Page: 5 Pages: 5			
Zeichnungsnummer (Drawing No.)							Revision					
211-D50-GA-UHV												
Datei (File) C:\PDM-Store\IC\PDM-Store\							Format		A4			
Index	Modification	Datum	Name									