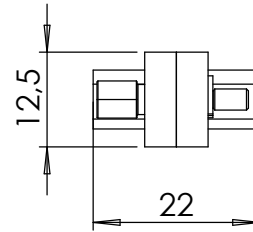
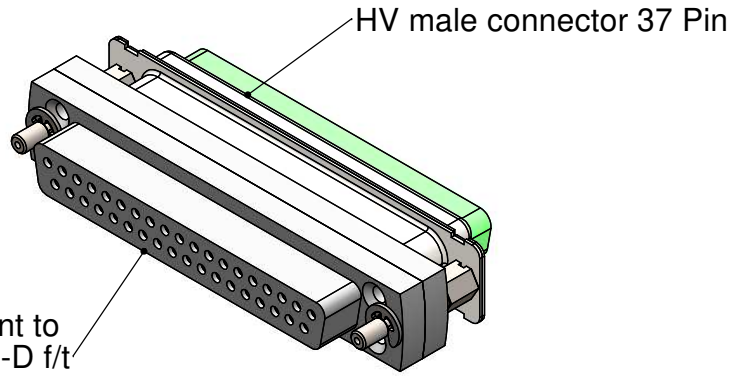
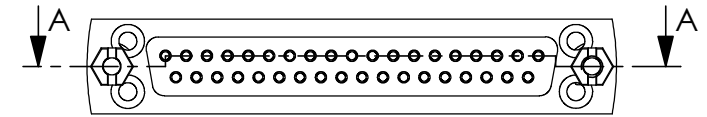


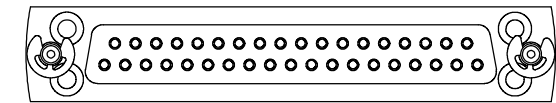
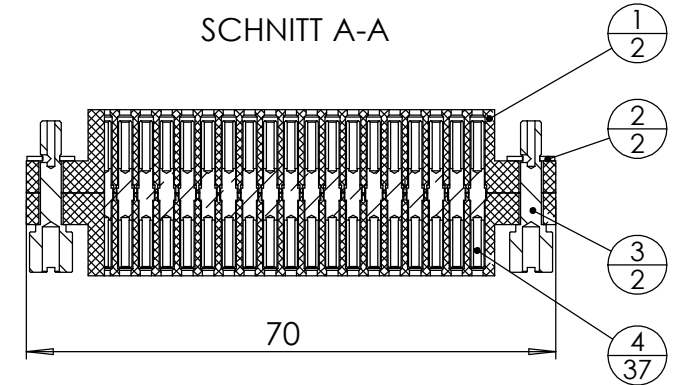
gender adapter in combination with 211-MS37-HV



POS-NR.	DESCRIPTION	MATERIAL	QTY
1	front plate for SUB-D 37 Pin	Glass Ceramic	2
2	903-SICHRING-D3,2	Stainless Steel	2
3	SUB-D Screw 4-40 UNC	1.4841 (X15CrNiSi25-21)	2
4	Female SUB-D Contact	2.1247 (CuBe2) gold plated	37

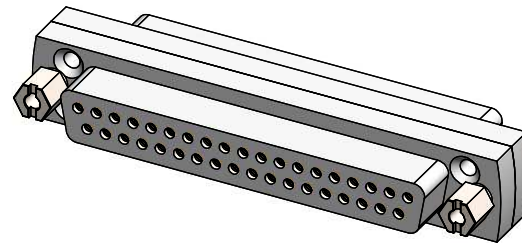


SCHNITT A-A

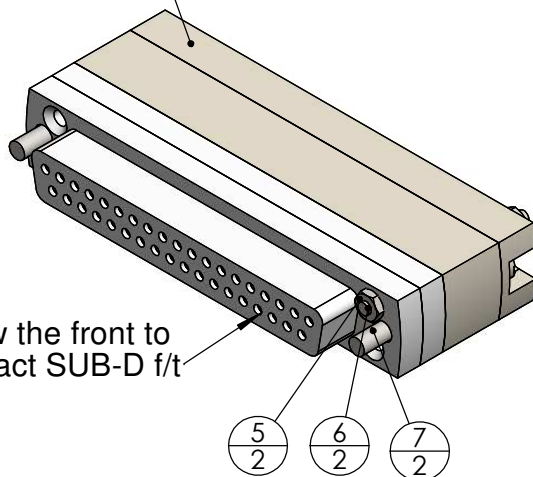


gender adapter in combination with 211-MS37-PK or 211-MS37-UHV

POS-NR.	DESCRIPTION	Material	QTY
5	Countersunk Screw M2X10	Stainless Steel	2
6	Hexagon Nut M2 DIN934	Stainless Steel	2
7	Screw 4-40 UNC	Stainless Steel	2



UHV / PEEK male connector 37 pin



Bemerkungen (Remarks)				Freimaßtoleranz (Standard Toleranz)	Maßstab (Scale)	Rauheit (Roughness)	europ.Projektion
All informations provided in this drawing is considered to be confidential, proprietary and secret information. If is intended only for the use of individual or entity to whom it is sent. Individual or entity agrees to not disseminate or copy this information to anyone other than originally specified without the written consent Alectra GmbH.					1:1		
				Datum	Name		
			Design	05.08.2020	AD	Bezeichnung (Title) Gender adapter 37 pin ceramic version	Gewicht (weight) g 40.29
			Drawn	06.08.2020	AD		Page: 4 Pages: 5
			Check				Revision
Index	Modification	Datum	Name			Zeichnungsnummer (Drawing No.) 211-D37-GA-UHV	Format A4
						Datei (File) C:\PDM-Store\C:\PDM-Store\	