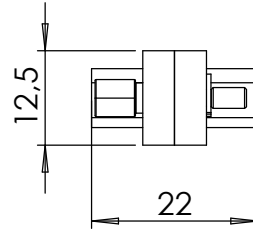
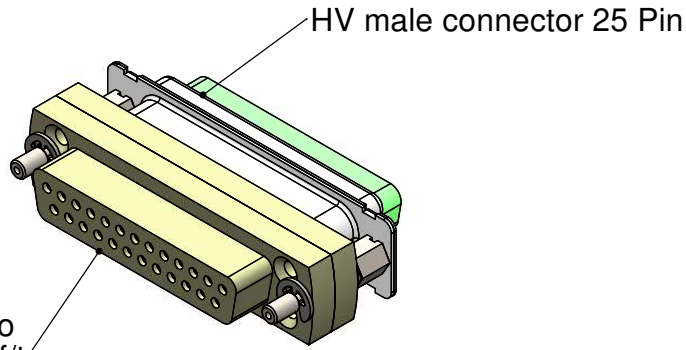
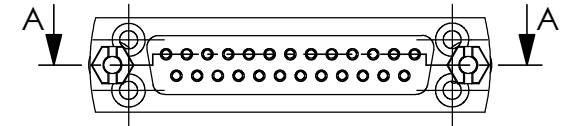


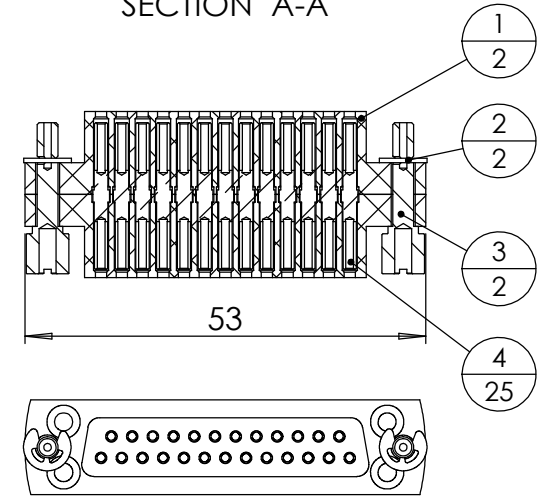
gender adapter in combination with 211-MS25-HV



POS-NR.	DESCRIPTION	MATERIAL	QTY
1	front plate for SUB-D 25 Pin	AL2O3	2
2	903-SICHRING-D3,2	Stainless Steel	2
3	SUB-D Screw 4-40 UNC	1.4841 (X15CrNiSi25-21)	2
4	Female SUB-D Contact	2.1247 (CuBe2) gold plated	25



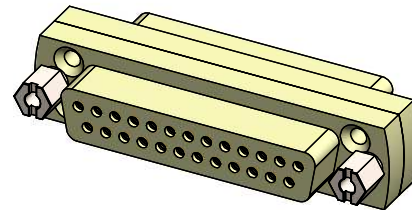
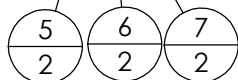
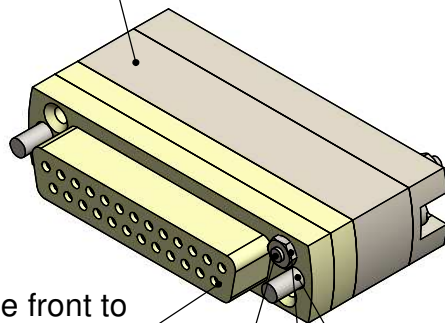
SECTION A-A



gender adapter in combination with 211-MS25-PK or 211-FS25-UHV

POS-NR.	DESCRIPTION	Material	QTY
5	Countersunk Screw M2X10	Stainless Steel	2
6	Hexagon Nut M2 DIN934	Stainless Steel	2
7	Screw 4-40 UNC	Stainless Steel	2

UHV / PEEK male connector 25 pin



Bemerkungen (Remarks)				Freimaßtoleranz (Standard Toleranz)	Maßstab (Scale)	Rauheit (Roughness)	europ.Projektion
All informations provided in this drawing is considered to be confidential, proprietary and secret information. If is intended only for the use of individual or entity to whom it is sent. Individual or entity agrees to not disseminate or copy this information to anyone other than originally specified without the written consent Allectra GmbH.				Datum	Name		
				Drawn	06.08.2020	AD	Material, Standard Oberfläche (Treatment) Kanten (edges)
				Check			Bezeichnung (Title) Gender adapter 25 pin ceramic version Gewicht (weight) g 40.29
						Zeichnungsnummer (Drawing No.) 211-D25-GA-UHV	
						Page: 3 / Pages: 5	
Index	Modification	Datum	Name	Datei (File) C:\PDM-Store\I:\PDM-Store\		Revision	
						Format A4	