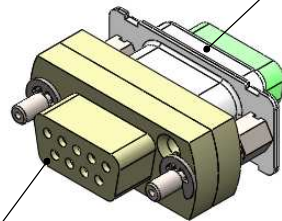
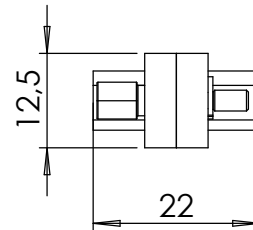


gender adapter in combination with 211-MS09-HV

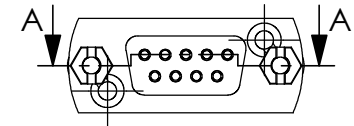
HV male connector 9 Pin



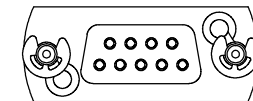
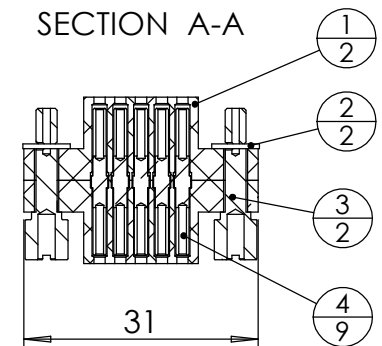
show the front to contact SUB-D f/t



POS-NR.	DESCRIPTION	MATERIAL	QTY
1	front plate for SUB-D 9 pin	AL2O3	2
2	903-SICHRING-D3,2	Stainless Steel	2
3	SUB-D Screw 4-40 UNC	1.4841 (X15CrNiSi25-21)	2
4	Female SUB-D Contact	2.1247 (CuBe2) gold plated	9



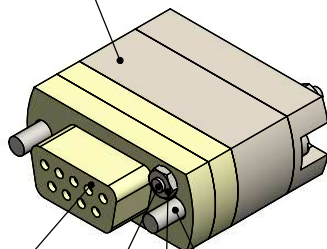
SECTION A-A



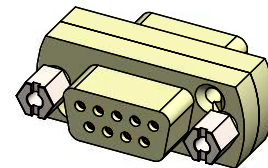
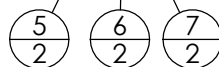
gender adapter in combination with 211-MS09-PK or 211-MS09-UHV

POS-NR.	DESCRIPTION	MATERIAL	QTY
5	Countersunk Screw M2X10	Stainless Steel	2
6	Hexagon Nut M2 DIN934	Stainless Steel	2
7	Screw 4-40 UNC	Stainless Steel	2

UHV / PEEK male connector 9 pin



show the front to contact SUB-D f/t



Bemerkungen (Remarks)				Freimaßtoleranz (Standard Toleranz)	Maßstab (Scale)	Rauheit (Roughness)	europ.Projektion
All informations provided in this drawing is considered to be confidential, proprietary and secret information. If is intended only for the use of individual or entity to whom it is sent. Individual or entity agrees to not disseminate or copy this information to anyone other than originally specified without the written consent Allectra GmbH.					1:1		
				Datum	Name	Material, Standard Oberfläche (Treatment)	Kanten (edges)
				Design	05.08.2020	AD	
				Drawn	06.08.2020	AD	Gewicht (weight) 9
				Check			40.29
				Bezeichnung (Title)			Page: 1
				Gender adapter 09 pin ceramic version			Pages: 5
				Zeichnungsnummer (Drawing No.)			Revision
				211-D09-GA-UHV			
Index	Modification	Datum	Name	Datei (File) C:\PDM-Store\I\PDM-Store\			Format A4

