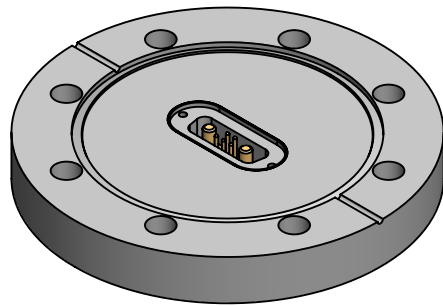
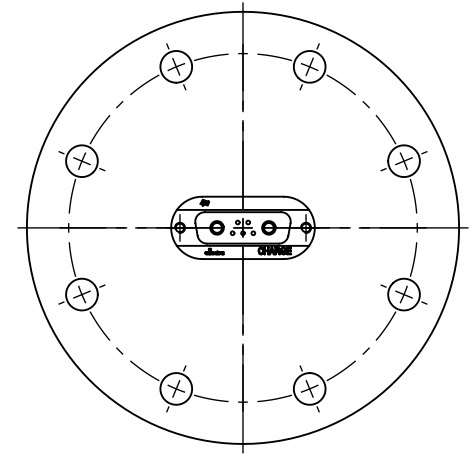
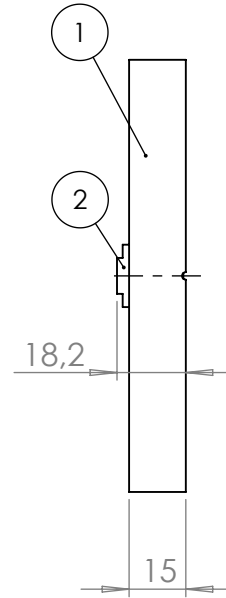
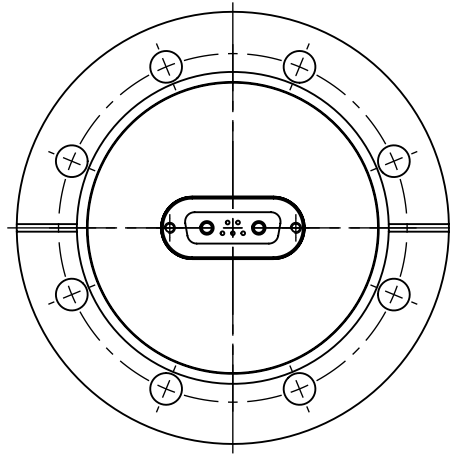


POS. NO.	DESCRIPTION	MATERIAL	QTY
1	modified flange DN63 CF	1.4404 (316L)	1
2	2 high power and 5 standard pins mixed SUB-D f/t	Stainless Steel	1



<1 E-10 mbar\*/sec, according to DIN EN 1779-A3  
Definition Leckprüfung (definiton leak check)

Zeichnung Nutzung (SCOPE OF DRAWING) Drawing external usage for customer		Verwendetes Material (USED MATERIAL)		Bemerkung (REMARKS)		Kanten (EDGES)		PROJECTION	
All informations provided in this drawing is considered to be confidential, proprietary and secret information. It is intended only for the use of individual or entity to whom it is sent. Individually or entity agrees to not disseminate or copy this information to anyone other than originally specified without the written consent Allectra GmbH.		Werkstoff (MATERIAL): Gewicht (WEIGHT): g		Toleranz (TOLERANCE) DIN EN 13920-C (welding ASSY)					
		Oberfläche (SURFACE) Cleaned UHV- Compatible		Maßstab (SCALE): 1:2					
origin		name Allectra standard		DATE		NAME		Benennung (DESCRIPTION): 1 off mixed pins, f/t on flange DN63 CF	
(drw/doc/sketch)				Design 15.03.2024		AD		Zeich. Nr. (Drw. No.): 210-X15-2P5-C63	
date		REV		Drawn 15.03.2024		AD			
00		first origin		Check 20.03.2024		JB			
				Approv 20.03.2024		JB		REV 00	
REV		Beschreibung (CHANGING)		gesp. am (SAVE DAT.): 20.03.2024		Art. Nr. (PART NO.): 210-X15-2P5-C63			

