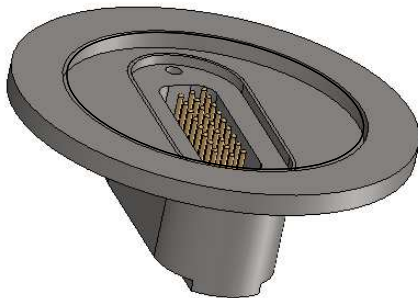
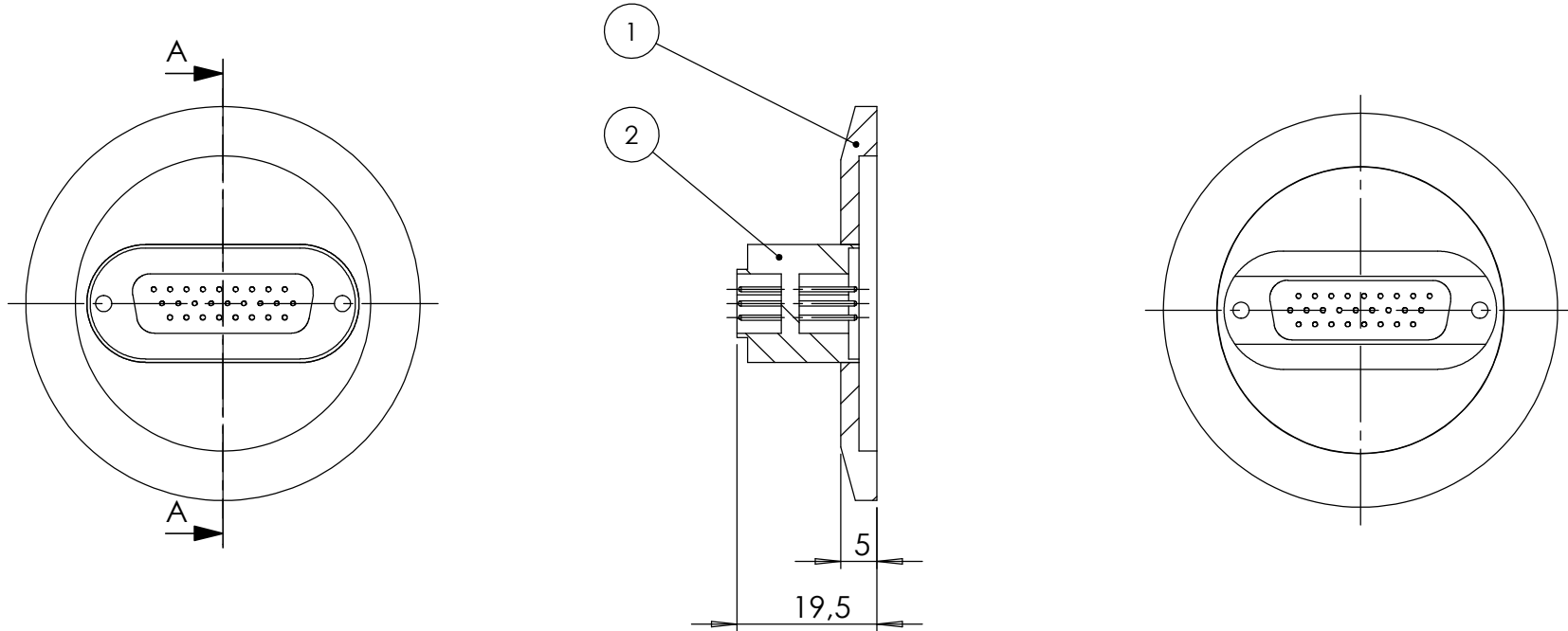


| POS-NR. | DESCRIPTION | MATERIAL | QTY |
|---------|-------------------------|--------------------------|-----|
| 1 | modified flange DN40 KF | 1.4404 (X2CrNiMo17-12-2) | 1 |
| 2 | SUB-HD f/t 26 pin | Stainless Steel | 1 |

SCHNITT A-A



| | | | | | | | | | | | |
|--|--|--|--|-------------------------------------|--|-----------------|--|--|--|---------------------------|--|
| Bemerkungen (Remarks) | | | | CON-HV-S=40, UHV HSG=40 | | | | | | europ.Projektion | |
| All informations provided in this drawing is considered to be confidential, proprietary and secret information. If is intended only for the use of individual or entity to whom it is sent. Individual or entity agrees to not disseminate or copy this information to anyone other than originally specified without the written consent Allectra GmbH. | | | | Freimaßtoleranz (Standard Toleranz) | | Maßstab (Scale) | | Rauheit (Roughness) | | | |
| | | | | | | 1:1 | | Material, Standard Oberfläche (Treatment) | | Kanten (edges) | |
| | | | | Datum | | Name | | Bezeichnung (Title) 1 of 26 pin SUB-D high density f/t on flange DN40 KF | | Gewicht (weight) g | |
| | | | | Design 25.09.2015 | | JB | | | | 102.76 | |
| | | | | Drawn 25.09.2015 | | FW | | | | Page: 1 | |
| | | | | Check 25.09.2015 | | | | | | Pages: 1 | |
| | | | | | | | | Zeichnungsnummer (Drawing No.) | | Revision | |
| | | | | | | | | 210-HD26-K40 | | | |
| Index | | | | Modification | | Datum | | Datei (File) | | Format A4 | |
| | | | | | | | | C:\PDMStore\IC\PDMStore\ | | | |

