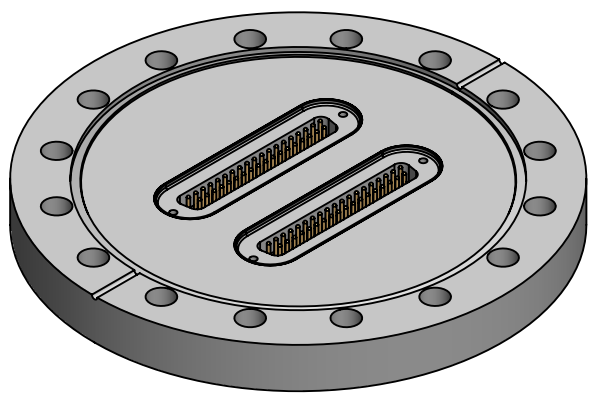
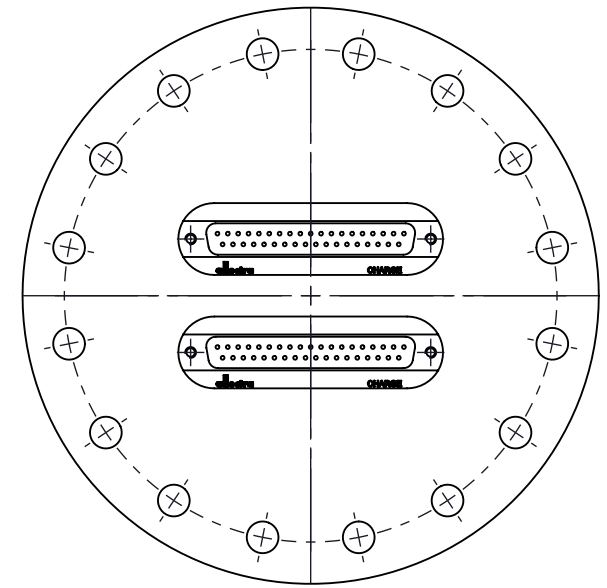
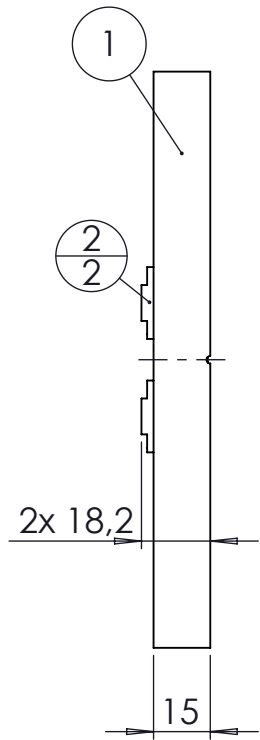
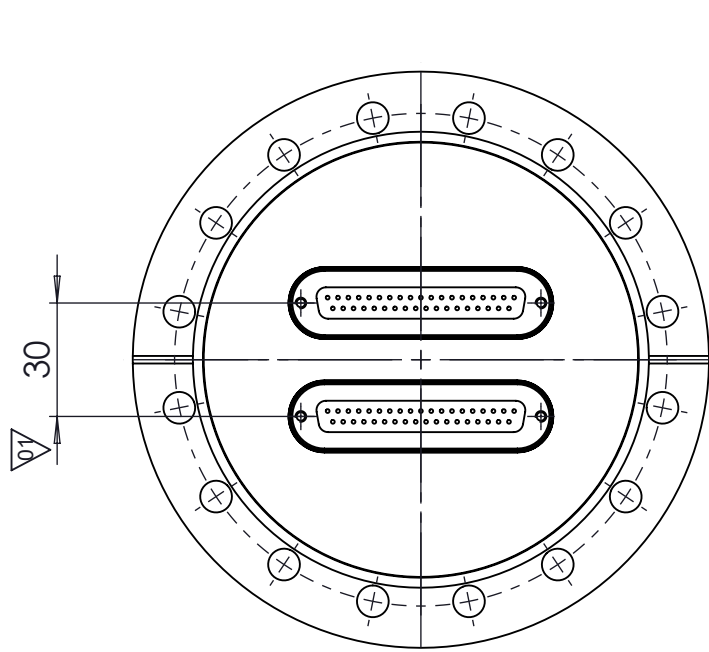


POS.	DESCRIPTION	MATERIAL	QTY
1	modified flange DN100 CF	1.4404 (316L)	1
2	37 pin SUB-D f/t	stainless steel	2



<1x10 E-10 mbar*/sec, according DIN EN 1779
Definition Leckprüfung (definon leak check)

Zeichnung Nutzung (using drawing) Drawing external use for customer		Verwendetes Material (USED MATERIAL)		Bemerkung (REMARKS) HSG=100		Kanten (EDGES)		PROJECTION	
All informations provided in this drawing is considered to be confidential, proprietary and secret information. It is intended only for the use of individual or entity to whom it is sent. Individual or entity agrees to not disseminate or copy this information to anyone other than originally specified without the written consent Alletra GmbH.		Werkstoff (MATERIAL):		Gewicht (WIGHT):		Toleranz (TOLERANCE) DIN EN 1390-C (welding ASSY)			
		Oberfläche (SURFACE) Cleaned UHV- Compatible		g					
		Maßstab (SCALE):		Format. (FORM)		PAGE NO		PAGES	
		1:2		A4		1		1	
		Rauheit (ROUGHNESS)							
		Benennung (DESCRIPTION): 2 off 37 pin SUB-D f/t on flange DN100 CF							
01		f/t poditin changed		DATE		NAME		Zeich. Nr. (Drw. No.): 210-D37-C100-2	
				Design 10.12.2015		AD		REV 01	
				Drawn 20.02.2024		AD			
				Check 21.02.2024		JUB			
				Approv 21.02.2024		AD			
REV		Beschreibung (CHANGING)				gesp. am (SAVE DAT.): 21.02.2024		Art. Nr. (PART NO.) 210-D37-C100-2	