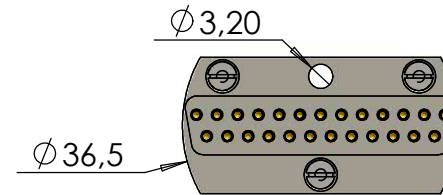
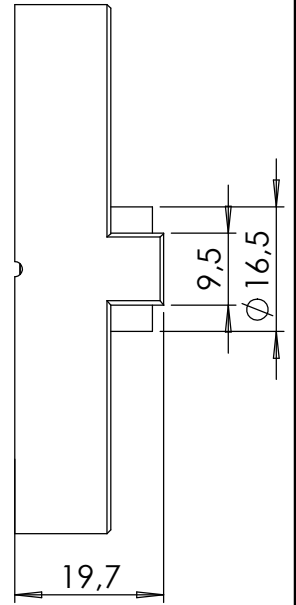
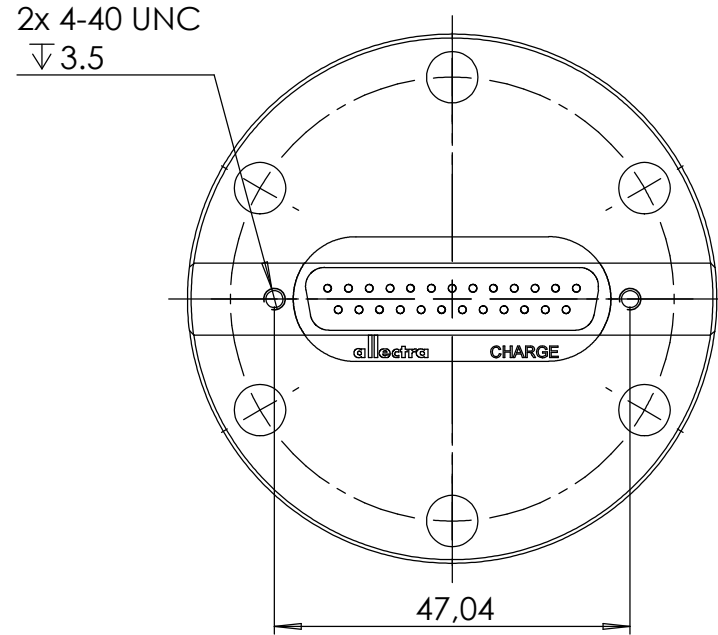
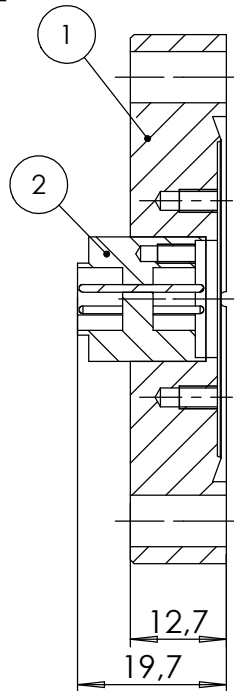
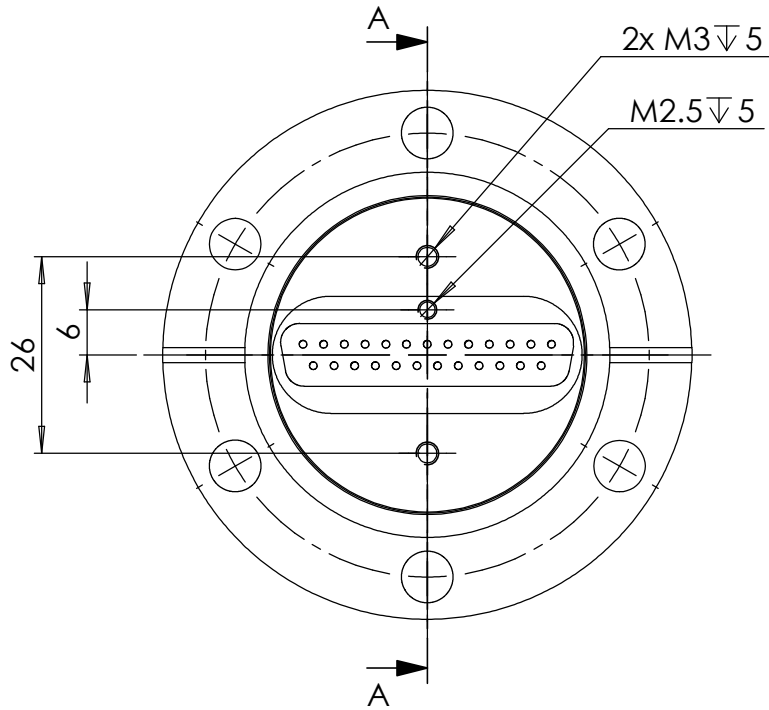


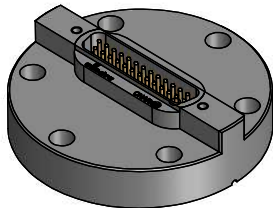
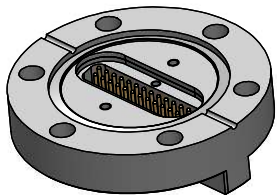
SECTION A-A

POS-NR.	DESCRIPTION	MATERIAL	QTY
1	special flange DN40 CF	1.4404 (316L)	1
2	25 pin SUB-D f/t, small type weldable	Stainless Steel	1



vac. side connector:
-211-FS25-PK-S
-211-FS25-UHV-S

SCALE 1:2



Bemerkungen (Remarks)				Freimaßtoleranz (Standard Tolerance)		Maßstab (Scale)		Rauheit (Roughness)		europ.Projektion							
All informations provided in this drawing is considered to be confidential, proprietary and secret information. If it is intended only for the use of individual or entity to whom it is sent. Individual or entity agrees to not disseminate or copy this information to anyone other than originally specified without the written consent Allectra GmbH.				Datum 02.02.2022 Name JB		1:1		Material, Standard Oberfläche (Treatment)		europ.Projektion Kanten (edges)							
												Design		Bezeichnung (Title)		Gewicht (weight)	
												Drawn		25 pin SUB-D f/t , small on special flange DN40 CF		355.51	
												Check				Page: 1 Pages: 1	
Index				Date		Revision		Format A4		Datei (File) c:\pdmstore\c:\pdmstore\							

