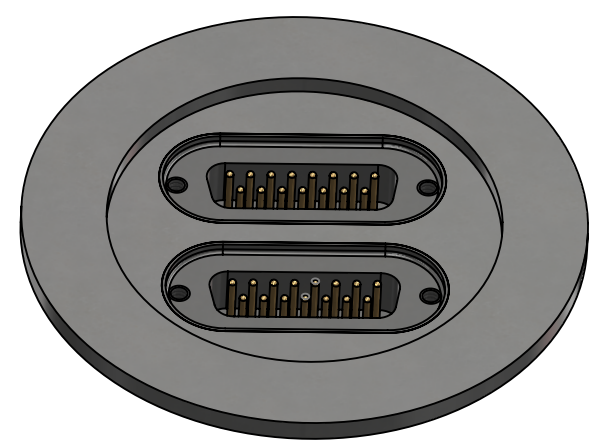
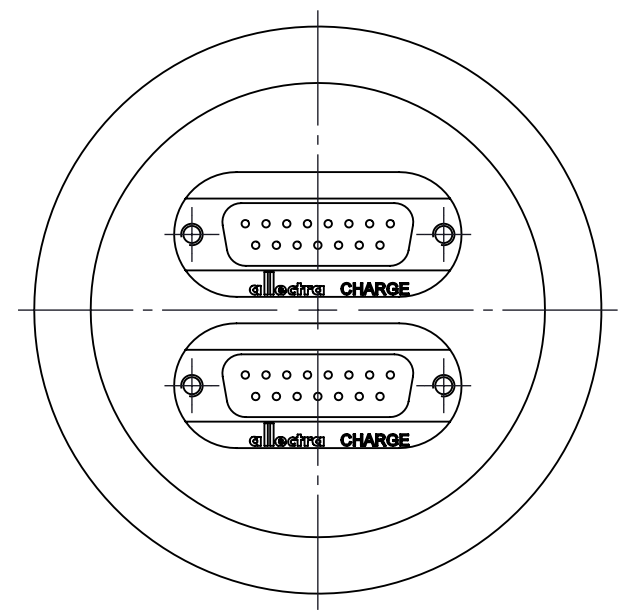
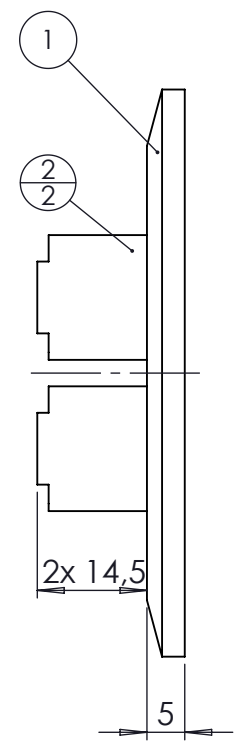
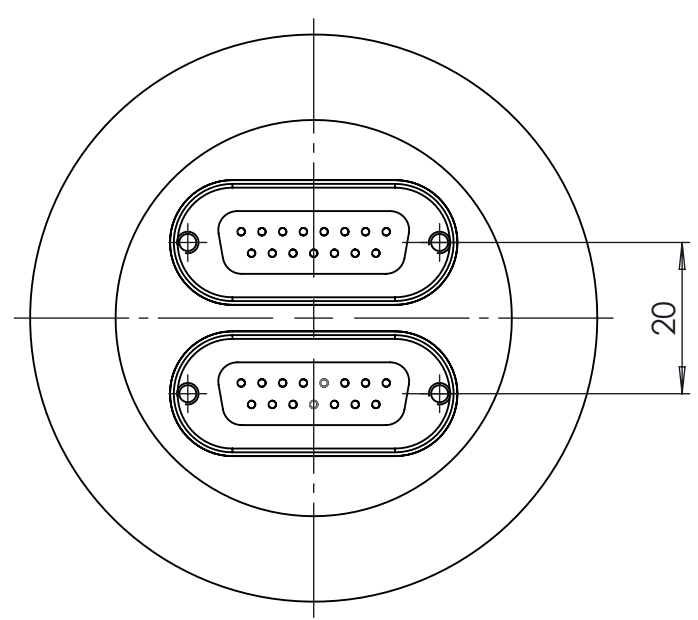


POS. NO.	DESCRIPTION	MATERIAL	QTY
1	modified flange DN50 KF	1.4301 (304)	1
2	15 pin SUB-D f/t	stainless steel	2



Zeichnung Nutzung (SCOPE OF DRAWING) Drawing external usage for customer		Prüfung Zubehör. (CON + HSG CHECK) housing HSG + CON UHV only	
All informations provided in this drawing is considered to be confidential, proprietary and secret information. It is intended only for the use of individual or entity to whom it is sent. Individual or entity agrees to not disseminate or copy this information to anyone other than originally specified without the written consent Allectra GmbH.		Werkstoff (MATERIAL):	
		Gewicht (WEIGHT):	
Oberfläche (SURFACE) Cleaned UHV- Compatible		Maßstab (SCALE): 1:1	
name: Allectra standard		DATE: 21.02.2018	NAME: JB
(drw/doc/sketch)		DATE: 27.01.2025	NAME: AD
date		DATE: 27.01.2025	NAME: JB
02	HSG check info changed	DATE: 28.01.2025	NAME: AD
REV Beschreibung (CHANGING)		gesp. am (SAVE DAT.): 28.01.2025	

Toleranz (TOLERANCE) DIN EN ISO 13920-C (welding ASSY)		Benennung (DESCRIPTION): 2 off 15 pin SUB-D f/t on flange KF50	
Kanten (EDGES)		Zeich. Nr. (Drw. No.): 210-D15-K50-2	
PROJECTION		REV 02	
Rauheit (ROUGHNESS)		Art. Nr. (PART NO.): 210-D15-K50-2	

$<1 \text{ E-10 mbar}^*/\text{sec, He, according to DIN EN 1779-A3}$ Definition Leckprüfung (definon leak check)			
Bemerkung (REMARKS)		Kanten (EDGES)	
Toleranz (TOLERANCE) DIN EN ISO 13920-C (welding ASSY)		PROJECTION	
Maßstab (SCALE): 1:1	Format. (FORM) A4	PAGE NO 1	PAGES 1
Oberfläche (SURFACE) Cleaned UHV- Compatible		Rauheit (ROUGHNESS)	
02 $<1 \text{ E-10 mbar}^*/\text{sec, He, according to DIN EN 1779-A3}$ Definition Leckprüfung (definon leak check)			

