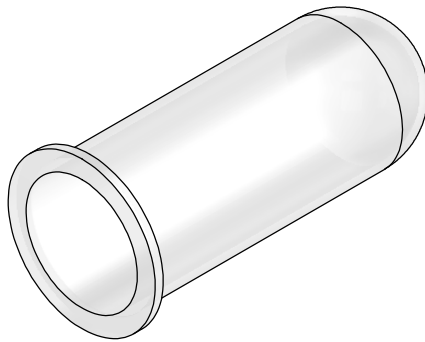
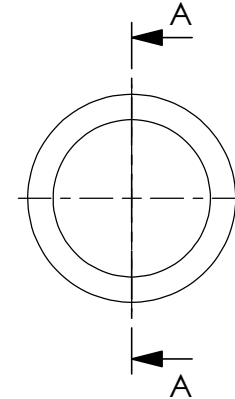
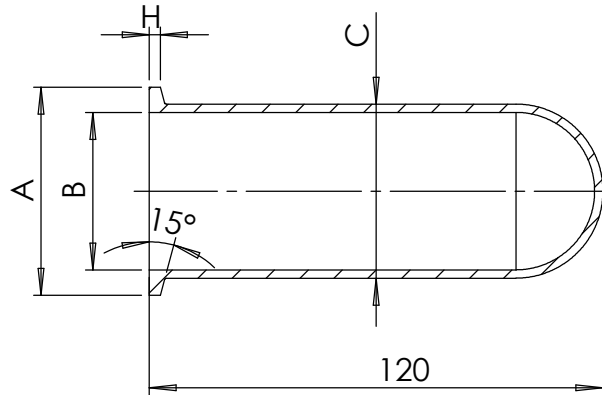
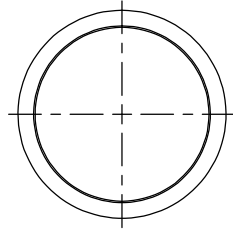


SECTION A-A

KF40 version is shown



Version	A	B ±0,1	C	H
165-DGA-K10	30	12,6	16	3,0/4,0
165-DGA-K16	30	17,1	20	3,0/4,0
165-DGA-K25	40	26,6	30	3,0/4,0
165-DGA-K40	55	41,6	46	3,0/4,0
165-DGA-K50	75	52,6	57	3,0/4,0

Bemerkungen (Remarks)				Freimaßtoleranz (Standard Tolerance)				Maßstab (Scale)		Rauheit (Roughness)		europ. Projektion	
All informations provided in this drawing is considered to be confidential, proprietary and secret information. If is intended only for the use of individual or entity to whom it is sent. Individual or entity agrees to not disseminate or copy this information to anyone other than originally specified without the written consent Allectra GmbH.				DIN ISO 2768-m		1:2		Material, Standard Oberfläche (Treatment)		Borosilikatglas 3.3		Kanten (edges)	
				Datum		Name		Bezeichnung (Title)		Gewicht (weight)			
				Design	18.02.2022	AD		Domed Borosilikatglas adaptor L=120mm		g		Page:	
				Drawn	21.02.2022	AD						1	
				Check								1	
Index				Modification		Date		Name		Zeichnungsnummer (Drawing No.)		Revision	
								allectra		165-DGA-KX			
								Datei (File)		C:\PDM-Store\C:\PDM-Store\		Format A4	