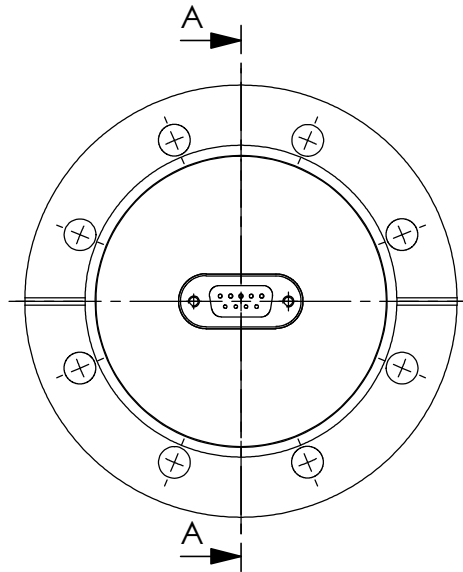
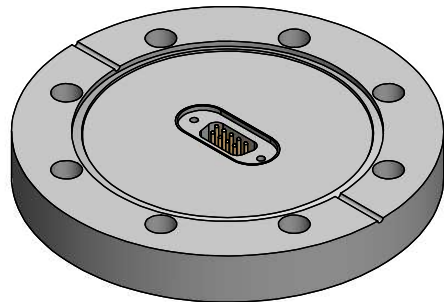
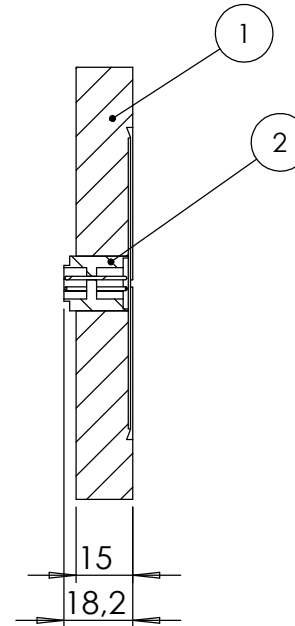


POS-NR.	DESCRIPTION	MATERIAL	QTY
1	modified flange DN63 CF	1.4404 (316L)	1
2	9 pin SUB-D f/t	Stainless Steel	1



SCHNITT A-A



Bemerkungen (Remarks)				Freimaßtoleranz (Standard Toleranz)		Maßstab (Scale)	Rauheit (Roughness)	europ.Projektion	
All informations provided in this drawing is considered to be confidential, proprietary and secret information. If is intended only for the use of individual or entity to whom it is sent. Individual or entity agrees to not disseminate or copy this information to anyone other than originally specified without the written consent Allectra GmbH.				Datum		Name	Material, Standard Oberfläche (Treatment)	 Kanten (edges)	
				Drawn 10.01.2018 FW		1:2			
				Check					1 of 9 pin Sub-D f/t on flange DN 63CF
							Zeichnungsnummer (Drawing No.) 210-D09-C63	Revision	
Index	Modification	Datum	Name						Datei (File) C:\PDMStore\C:\PDMStore\